



# Section n °13

## Modular junction box

<b>ELECTRICAL JUNCTION BOX</b>	13.1
--------------------------------	------

<b>ACCESSORIES FOR ELECTRICAL JUNCTION BOX</b>	13.4
--	------

<b>CONTACTS FOR UNIT BOXES</b>	13.5
--------------------------------	------

<b>MODULAR JUNCTION BOX</b>	13.9
-----------------------------	------

<b>CABLE JUNCTION BOX</b>	13.26
---------------------------	-------



## Section n°13 - Modular junction box

### ELECTRICAL JUNCTION BOX



#### 13.1 MINI Electrical Junction Box

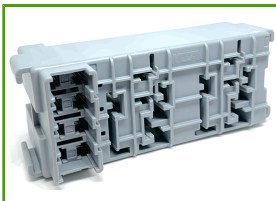
Code	Total Number of Ways	Color	Accessory Contacts	Notes
7701	20	grey	5602	20 MINI Fuse



#### 13.2 MINIVAL Electrical Junction Box

Code	Total Number of Ways	Color	Accessory Contacts	Notes
7702	20	grey	5602 + 5601 + 5605	8 MINI Fuse + 4MICRO Relay

Fuses and Relays not included



#### 13.3 MINIVAL Electrical Junction Box

Code	Total Number of Ways	Color	Accessory Contacts	Notes
7703	4 + 2	grey	5602 + 5605	4 MINI Fuse + 2MINI Relay

Fuses and Relay not included

### ACCESSORIES FOR ELECTRICAL JUNCTION BOX



#### 13.4 Mounting Support and Cover

Code	Total Number of Ways
7704	1

### CONTACTS FOR UNIT BOXES



#### 13.5 MTA F280 Contact

Code	Industrial Code	Wire Size Range (mm <sup>2</sup> )	Raw Material	Extraction Tool	Hand Tool
5602	1108331	1,00 - 2,00	tin-plated brass	99022	3991



#### 13.6 MTA F480 Contact

Code	Industrial Code	Wire Size Range (mm <sup>2</sup> )	Raw Material	Extraction Tool	Hand Tool
5601	1108401	1,50 - 2,50	tin-plated brass	90207, 90028	3987

## Section n°13 - Modular junction box



### 13.7 MTA F630E Contact

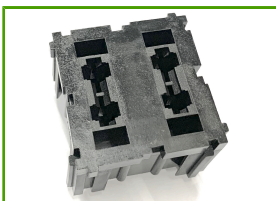
Code	Industrial Code	Wire Size Range (mm <sup>2</sup> )	Raw Material	Extraction Tool	Hand Tool
5603	1108501	0,75 - 1,50	tin-plated brass	90022	3991
5605	-	2,00 - 3,00	tin-plated brass	-	-



### 13.8 UNI630 MTA Contact

Code	Wire Size Range (mm <sup>2</sup> )	Raw Material
5604	0,50 - 1,50	tin-plated brass

## MODULAR JUNCTION BOX



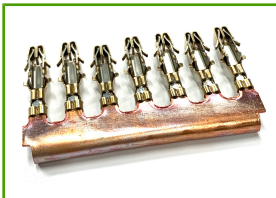
### 13.9 ATO Fuses Modules

Code	Type	A	Notes
354-501	single	60	2 ATO FUSES
354-502	double	120	4 ATO fuses
354-503	double	120	7 ATO fuses



### 13.10 Contacts for ATO Fuseholder

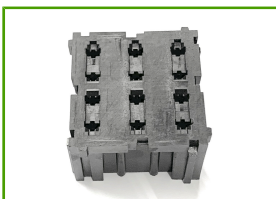
Code	Industrial Code	Wire Size Range (mm <sup>2</sup> )	Extraction Tool	Hand Tool
3607	913-071	1,00 - 2,00	25030	3991
3608	913-072	2,50 - 4,00	25030	3987



### 13.11 Frame for Modular Fuse Holder

Jumper bar for 7

Code
913-077



### 13.12 MINI Fuses Modules

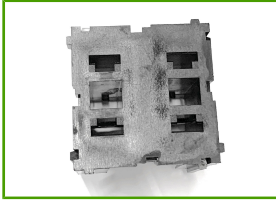
Code	Type	A	Notes
354-543	single	60	6 MINI fuses
354-544	single	60	8 MINI Fuses



### 13.13 Contact for MINI Fuseholders

Code	Industrial Code	Wire Size Range (mm <sup>2</sup> )	Raw Material	Extraction Tool	Hand Tool
927779/3	927779/3	0,50 - 1,00	Bz Ph Sn	88040	3991
927781/3	927773/3	1,00 - 2,50	Bz Ph Sn	88040	3987

## Section n°13 - Modular junction box



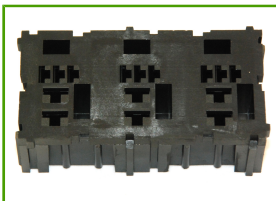
### 13.14 MAXI Fuses Modules

Code	Type	A	Notes
354-549	single	80	2 MAXI fuses
354-505	double	160	4 MAXI fuses



### 13.15 Contacts for MAXI Fuseholder

Code	Industrial Code	Wire Size Range (mm <sup>2</sup> )	Hand Tool
3602	913-064	1,50 - 2,50	3987
3606	913-068	2,50 - 6,00	3987



### 13.16 Micro Relay Module

Code	Type	Notes
354-507	double	3 relays MICRO



### 13.17 Contact for Micro Relay Modules

Code	Industrial Code	Type	Wire Size Range (mm <sup>2</sup> )	Extraction Tool	Hand Tool
3603	913-065	medium contact	0,50 - 1,50	90028	3991
3601	913-055	medium contact	2,50 - 4,00	90028	3987
3605	913-067	little contact	0,50 - 1,50	90028	3991
3604	913-066	little contact	1,00 - 2,50	90028	3987



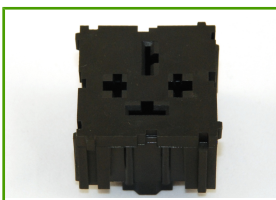
### 13.18 ISO Relay & Flasher Modules

Code	Type	Notes
354-506	single	1 MINI relay
354-536	double	2 relays MINI



### 13.19 Contact for Mini Relay Modules

Code	Industrial Code	Type	Wire Size Range (mm <sup>2</sup> )	Extraction Tool	Hand Tool
3603	913-065	medium contact	0,50 - 1,50	90028	3991
3601	913-055	medium contact	2,50 - 4,00	90028	3987



### 13.20 Power Relay Module

Code	Type	Notes
354-535	single	1 power relay

## Section n°13 - Modular junction box



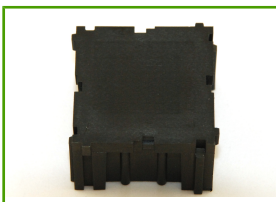
### 13.21 Contact for Power Relays

Code	Industrial Code	Type	Wire Size Range (mm <sup>2</sup> )	Raw Material	Extraction Tool	Hand Tool
3603	913-065	medium contact	0,50 - 1,50	-	90028	3991
3601	913-055	medium contact	2,50 - 4,00	-	90028	3987
182490/2	280756/2	big terminal	4,00 - 6,00	tin-plated brass	88074	3987



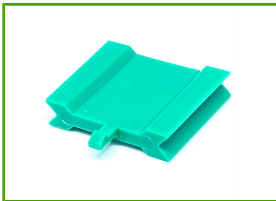
### 13.22 Stud Assembly Module 1 pin

Code	Screw Hole
354-539	M8
354-537	M6
354-538	M6



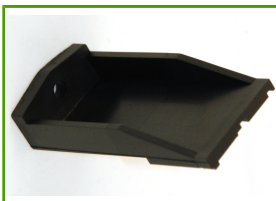
### 13.23 Power Block accessories: empty module

Code
354-520



### 13.24 Power BLOCK accessories: module locking insert

Code
354-523



### 13.25 Power Block accessories: brackets

Code	Height	Notes
354-518	76,2	low attack
354-519	25,4	high attack
354-540	63,5	lateral attack

## Section n°13 - Modular junction box

### CABLE JUNCTION BOX



#### 13.26 Cable Junction Box 4 Fittings

Code
192052



#### 13.27 Cable Junction Box 12 Fittings

Code
192082