



## Section n °9

### Harness accessories

<b>TAPES</b>	9.1
<b>OPEN CONVOLUTED TUBES</b>	9.10
<b>CLOSED CONVOLUTED TUBES</b>	9.11
<b>TEXTILE SLEEVE SELF CLOSING</b>	9.12
<b>TEXTILE SLEEVE EXPANDABLE BRAIDED SLEEVING</b>	9.13
<b>HEAT SHRINCABLE WITHOUT GLUE SHRINK RATIO 2:1</b>	9.14
<b>HEAT SHRICABLE WITH GLUE SHRINK RATIO 3:1</b>	9.15
<b>HARNESS ACCESSORIES</b>	9.16
<b>ACCESSORIES FOR CONNECTORS</b>	9.19
<b>METAL CLAMPS</b>	9.25

---

## Section n°9 - Harness accessories

### TAPES



#### 9.1 Heat reflective tape

Code	Color	Raw Material	Depth
1950	silver	aluminum coating	25

for protection from high temperatures



#### 9.2 Black Ryon Adhesive Tape

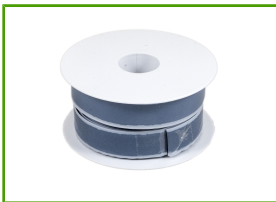
Code	Color	Raw Material	Width	Depth
1925B	black	fabric	19	30

for wiring protection



#### 9.3 PVC Tapes

Code	Color	Raw Material	Width	Depth
1500	black	PVC	15	10
1900	black	PVC	19	25



#### 9.4 Velcro Tape Male-Female

Code	Color	Raw Material	Width	Depth
1930	black	adhesive velcro M/F	19	30



#### 9.5 Velcro Tape M

Code	Color	Raw Material	Width	Depth
1935	black	adhesive velcro M	19	1



#### 9.6 Velcro Tape M 50 mm longer

Code	Color	Raw Material	Width	Depth
1936	black	adhesive velcro M	50	25



#### 9.7 Amalgamating Tape

Temperature Limits: - 40C +100C

Code	Color	Raw Material	Width
2517	black	autobond	25

## Section n°9 - Harness accessories



### 9.8 American Tape

Code	Color	Raw Material	Width	Depth
1956	silver	aluminum / fabric	50	50



### 9.9 Tape Anti Noise

Code	Color	Raw Material	Width	Depth
1957	black	fleece	19	5

to be used inside the car to increase soundproofing

## Section n°9 - Harness accessories

### OPEN CONVOLUTED TUBES

#### 9.10 Open Convoluted Tubes



NOTE: not use code 7077 (cap. 11) COLOR: black, MATERIAL: self-extinguishing propylene,  
TEMPERATURE: -30 ° + 105 ° C

Code	Industrial Code	Inustrial Package	Ext. Diam.	Diameter	Standard Package
PFR4	00669	4000	7,2	4,3	100
PFR6	00670	4250	9,5	6	100
PFR9	00671	2400	11,3	9	100
PFR11	00672	1600	16,4	11	100
PFR13	00673	1250	18,4	13	100
PFR16	00674	900	21,2	16	50
PFR19	00675	750	24	19	50
PFR23	00676	500	28,6	23	25
PFR26	00677	350	31,7	25,5	25
PFR29	01385	300	35,9	29	25
PFR32	00678	250	39,4	32	25

## Section n°9 - Harness accessories

### CLOSED CONVOLUTED TUBES

#### 9.11 Closed Convoluted Tubes



NOTE: COLOR: black, MATERIAL: self-extinguishing propylene, TEMPERATURE: -30 ° + 105 ° C

Code	Industrial Code	Inustrial Package	Ext. Diam.	Diameter	Standard Package
GAF4.5	13606	4000	7,8	4,3	100
GANF7.5	02025	4000	10	6,7	50
GANF8.5	03018	2500	11,7	8,4	50
GANF10	00835	2400	13	9,9	50
GANF12	00836	1600	15,7	12,2	50
GANF17	06075	900	21,2	16,6	50
GANF22	05297	500	25,4	21,3	50
GANF29	18055	300	34,5	29	25

## Section n°9 - Harness accessories

### TEXTILE SLEEVE SELF CLOSING

APPLICATION: all harnesses.

#### 9.12 Textile Sleeve Self Closing NU GUARD SC-P



FEATURES: T4 (-40° + 150°C), abrasion resistance, fluid resistance (oil, fuel, gasole, break fluid and cool fluid).

MAX temperature range 175°C for 200 h.

Code	Industrial Code	Industrial Package	Diameter	Initial Diameter	Final Diameter	Standard Package
18930	-	-	8	6	8	8
18931	-	-	10	9	10	5
18932	-	-	13	11	13	5
18933	-	-	16	14	16	5
18934	-	-	19	17	19	4
18935	-	-	25	20	25	2,5
18936	35728	400	8	6	8	50
18937	37686	200	10	9	10	50
18938	35729	200	13	11	13	50
18939	35730	160	16	14	16	40
18940	37687	100	19	17	19	25
18941	35731	250	25	20	25	25

## Section n°9 - Harness accessories

### TEXTILE SLEEVE EXPANDABLE BRAIDED SLEEVING

#### 9.13 Textile Sleeve Expandable Braided Sleevings



NOTES: COLOR: black, MATERIAL: polyester, TEMPERATURE: -50 ° + 105 ° C

Code	Industrial Code	Industrial Package	Diameter	Final Diameter	Standard Package
18906	T46	100	6	12	16
18910	T410	100	10	18	12
18912	T412	50	12	22	9
18915	T415	50	15	25	7
18920	T420	50	20	30	6
18925	T425	50	25	38	5
T440	-	50	40	60	-
T450	-	50	50	72	-



## Section n°9 - Harness accessories

### HEAT SHRINCABLE WITHOUT GLUE SHRINK RATIO 2:1

#### 9.14 Heat Shrinkable 2:1 without



NOTES: COLOR: black, MATERIAL: polyolefin, Low-Shrink temperature.

Code	Industrial Code	Industrial Package	Height	Initial Diameter	Final Diameter	Standard Package
LSTT 1.6	LSTT 1.6	600	0,5	1,6	0,8	-
727003	LSTT-2.4	300	0,55	2,4	1,2	12
727004	LSTT 3.2	300	0,55	3,2	1,6	12
727005	LSTT 4.8	300	0,55	4,8	2,4	10
727006	LSTT 6.4	150	0,65	6,4	3,2	10
727007	LSTT 9.5	150	0,65	9,5	4,8	7
727008	LSTT 12.7	150	0,65	12,7	6,3	7
727023	LSTT 19.0	150	0,8	19	9,5	5
727010	LSTT 25.4	60	0,95	25,4	12,7	5
727011	LSTT 38.0	60	1,05	38	19	3

## Section n°9 - Harness accessories

### HEAT SHRINKABLE WITH GLUE SHRINK RATIO 3:1

#### 9.15 Heat Shrinkable 3:1 with Glue



NOTES: COLOR: black, MATERIAL: polyolefin, flame-retardant.

Code	Industrial Code	Industrial Package	Original Reference	Height	Initial Diameter	Final Diameter	Standard Package
727013	ATUM 4/5-1/5	80	CGAT 4,5/1,5	0,6	4,5	1,5	10
727012	ATUM 3/1	150	CGAT 3/1	0,5	3	1	12
727014	ATUM 6/2	250	CGAT 6/2	0,75	6	2	8
727015	ATUM 9/3	200	CGAT 9/3	0,75	9	3	6
727016	ATUM 12/4	200	CGAT 12/4	0,75	12	4	5
727017	ATUM 18/6	150	CGAT 18/6	0,85	18	6	4
727018	ATUM 24/8	80	CGAT 24/8	1	24	8	2,5
727019	ATUM 40/13	60	CGAT 39/13	1,15	39	13	1,2

## Section n°9 - Harness accessories

### HARNESS ACCESSORIES

#### 9.16 Standard Cable Ties According MIL-S-23190E



Code	Industrial Code	Color	Raw Material	Width	Height
2/160968/2	4/160968/2	black	polyamide 6.6	2,6	134
2/160973/2	4/160973/2	black	polyamide 6.6	4,5	160
4/160969/2	-	black	polyamide 6.6	2,6	200
2/160975/2	4/160975/2	black	polyamide 6.6	4,8	200
4/160963/2	-	black	polyamide 6.6	3,6	290
2/160977/2	4/160977/2	black	polyamide 6.6	4,8	290
2/160983/2	4/160983/2	black	polyamide 6.6	7,8	365
2/160978/2	4/160978/2	black	polyamide 6.6	4,8	370
2/160984/2	-	black	polyamide 6.6	7,8	450



#### 9.17 Two Ways Adhesive Mount

glue setting time: 24H

Code	Color	Raw Material	Width	Height
2/100691/2	black	polyamide 6.6	19	19
2/100692/2	black	polyamide 6.6	26	26



#### 9.18 Cable Adhesive Mount

Code	Color	Raw Material	Width	Height
9482	black	polyamide 6.6	19	19
9483	black	polyamide 6.6	26	26



#### 9.19 Cappucci di Protezione per Connettori Serie 150 e Timer

Code	Total Number of Ways	Color	Raw Material	Height
75553	2	black	NBR	65
76319	3	black	NBR	65
75554	4	black	NBR	65
75555	5	black	NBR	65
76320	7	black	NBR	65

## Section n°9 - Harness accessories



### 9.20 Deutsch DT Series Water Proof Covers

Code	Total Number of Ways	Type	Color	Application
75570	2	for tab housing	black	DT04-2P
75571	2	for male housing	black	DT06-2S
75572	3	for receptacle housing	black	DT06-3S
75573	3	for tab housing	black	DT04-3P
75574	4	for receptacle housing	black	DT06-4S
75575	4	for tab housing	black	DT04-4P
75576	6	for receptacle housing	black	DT06-6S
75577	6	for tab housing	black	DT04-6P
75578	8	for receptacle housing	black	DT06-8S
75579	8	for tab housing	black	DT04-8P
75580	12	for receptacle housing	black	DT06-12S
75581	12	for tab housing	black	DT04-12P



### 9.21 Multisize Adapters

Code	Total Number of Ways	Color	Raw Material	Temperature Range	Application
75557	2	black	PA 6.6	-40°C + 150°C	Connectors 282080/1 and 282104/1, corrugated pipe outlet diameter (mm) 7,5-8,5-10
75558	3	black	PA 6.6	-40°C + 150°C	Connectors 282087/1 and 282105/1, corrugated pipe outlet diameter (mm) 7,5-8,5-10
75559	4	black	PA 6.6	-40°C + 150°C	Connectors 282088/1 and 282106/1, corrugated pipe outlet diameter (mm) 10
75556	10	black	PA 6.6	-40°C + 150°C	Connectors 282943/1 e 282943/2, corrugated pipe outlet diameter (mm) 10



### 9.22 DEUTSCH DT Front Cap

Code	Total Number of Ways	Color	Application
75583	2	black	4042 and DT06-2S
75587	3	black	4043 and DT06-3S



### 9.23 Tappi Anteriori SUPERSEAL

Code	Total Number of Ways	Color	Application
75582	2	black	282080/1
75584	3	black	282087/1
75586	4	black	282088/1



### 9.24 SICMA Front Cap

Code	Total Number of Ways	Color	Application
75585	3	black	211PC032S5049, 211PC032S0149

## Section n°9 - Harness accessories

### METAL CLAMPS



#### 9.25 TC 9 mm Metal Clamps

Code	Raw Material	Initial Diameter	Final Diameter
108	galvanized steel	8	12
110	galvanized steel	10	16
112	galvanized steel	12	20
116	galvanized steel	16	25
120	galvanized steel	20	32
125	galvanized steel	25	-
132	galvanized steel	32	50
140	galvanized steel	40	60
155	galvanized steel	50	70
160	galvanized steel	60	80
170	galvanized steel	70	90



#### 9.26 SX 12 C Metal Clamps

Code	Raw Material	Initial Diameter	Final Diameter
1235	galvanized steel	25	40
1230	galvanized steel	30	45
1232	galvanized steel	32	50
1240	galvanized steel	40	60
1250	galvanized steel	50	70
1260	galvanized steel	60	80
1270	galvanized steel	70	90
1290	galvanized steel	90	110



#### 9.27 SM 9 mm Metal Clamps

Code	Raw Material	Diameter
198	galvanized steel	8
199	galvanized steel	9
100	galvanized steel	10
101	galvanized steel	11
102	galvanized steel	12
1113	galvanized steel	13
1114	galvanized steel	14
1115	galvanized steel	15



#### 9.28 Metal Clamps with Rubber Coating

APPLICAZIONE: corrugato e tubi.

Code	Raw Material	Diameter
2108	galvanized steel	8
153	galvanized steel	10
252	galvanized steel	14
351	galvanized steel	16
405	galvanized steel	18
559	galvanized steel	22
603	galvanized steel	24
630	galvanized steel	30
640	galvanized steel	40

## Section n°9 - Harness accessories



### 9.29 Steel Self Locking Metal Clamp

APPLICATION: control speed universal joint

Code	Raw Material	Width	Height
115	stainless steel	7,9	360
119	stainless steel	7,9	520



### 9.30 Ties for constant velocity universal joint

NOTE:hand tools 529.

Code	Raw Material	Initial Diameter	Final Diameter
118	stainless steel	24	60
122	stainless steel	45	120