



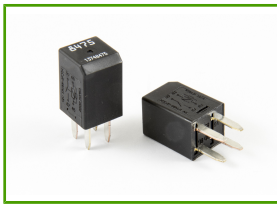
Section n °6

Relays & relay sockets

12V 280 ULTRA MICRO RELAYS	6.1	12V 280 MICRO RELAYS	6.2
12V MICRO RELAYS FOR CARS	6.3	12V MINI RELAYS FOR CARS	6.4
12V RELAYS WITH FUSES	6.5	12V TIMED RELAYS	6.6
12V POWER RELAYS	6.7	12V FLIP FLOP RELAYS	6.8
12V RELAYS SEALED	6.9	THRESHOLD RELAY 12V	6.10
24V MICRO RELAYS	6.11	24V MINI RELAYS	6.12
24V RELAYS WITH FUSES	6.13	24V POWER RELAYS	6.14
24V FLIP FLOP RELAYS	6.15	24V TIMED RELAYS	6.16
SEALED RELAY 24V	6.17	THRESHOLD RELAY 24V	6.18
MICRO RELAYS SOCKET	6.19	STANDARD RELAYS SOCKET	6.23
SEALED RELAYS SOCKET	6.33	DIODES BOX	6.34

Section n°6 - Relays & relay sockets

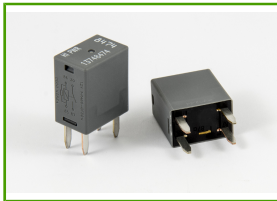
12V 280 ULTRA MICRO RELAYS



6.1 12V 280 Ultra Micro Relay

Code	Volt	Diode or Resistor	Relay Electrical Diagram	N.O.	Total Relays Contacts
13748475	12	resistor	C2	20	4

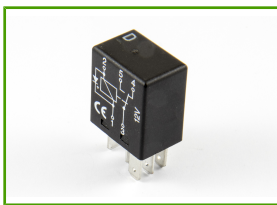
12V 280 MICRO RELAYS



6.2 12V 280 Micro Relays

Code	Volt	Diode or Resistor	Relay Electrical Diagram	N.O.	N.C.	Total Relays Contacts
13748474	12	resistor	C2	30	-	4
13814412	12	resistor	C5	20	10	5

12V MICRO RELAYS FOR CARS



6.3 12V Micro Relays

DIMENSIONS: 26 x 15 x 23 mm

Code	Volt	Diode or Resistor	Relay Electrical Diagram	N.O.	N.C.	Total Relays Contacts	Relay contacts 4.8	Relay Contacts 6.3	Relay Socket	
201005	12	resistor	C5	20	10	5	3	2	A, B, C, D	
201006	12	resistor	C2	20	-	4	2	2	A, B, C, D	
201145	12	diode	C6	25	15	5	3	2	A, B, C, D	
!	201045	12	diode	C3	25	-	4	2	2	A, B, C, D
201075	12	resistor	C2	30	-	4	2	2	A, B, C, D	

Section n°6 - Relays & relay sockets

12V MINI RELAYS FOR CARS



6.4 12V Mini Relays

DIMENSIONS: 25 x 25 x 21,5 mm.

Code	Kit Code	Volt	Diode or Resistor	Relay Electrical Diagram	N.O.	N.C.	Total Relays Contacts	Relay Contacts 6.3	Relay Bracket	Relay Socket
200300	-	12	-	C1	30	-	4	4	removable	E, F, G, K, L
210003	-	12	diode	C8	30	-	5	5	removable	E, F, G, K, L
210007	3310	12	-	C9	40	-	5	5	removable	E, F, G, K, L
210064	3311	12	resistor	C5	40	30	5	5	no	E, F, G, K, L
210101	-	12	resistor	C5	40	30	5	5	removable	E, F, G, K, L
210301	-	12	diode	C6	40	30	5	5	removable	E, F, G, K, L
210001	-	12	resistor	C7	40	-	5	5	yes	E, F, G, K, L
210201	-	12	-	C4	40	30	5	5	removable	E, F, G, K, L
212300	-	12	-	C11	25 + 25	-	5	5	removable	E, F, G, K, L

12V RELAYS WITH FUSES



6.5 12V Relay with Fuse

Code	Kit Code	Volt	Relay Electrical Diagram	N.O.	Total Relays Contacts	Relay Contacts 6.3	Relay Bracket	Relay Socket
1609/30	3315	12	C1	30	4	4	removable	E, F, G, K, L

12V TIMED RELAYS



6.6 12V Timed Relay

NOTE: Multitimer is a timed relay used to switch the user component ON-OFF after a delay time selectable through of 2 selectors on the cover. The delay it's programmable from 0.5 sec up to 6 h. The timed relay can be activated through a pulse and can be triggered by switch or push button.

Code	Volt	Relay Electrical Diagram	N.O.	Total Relays Contacts	Relay Contacts 6.3	Notes	Relay Socket
40205	12	C12	10	5	5	programmable time 0.5 sec. - 6h	E, F, G, K, L

Section n°6 - Relays & relay sockets

12V POWER RELAYS



6.7 12V Relays

Code 231180: relays layout contacts 30-87= 6mA

Code	Kit Code	Volt	Diode or Resistor	Relay Electrical Diagram	N.O.	N.C.	Total Relays Contacts	Relay Contacts 6.3	Relay contacts 9.5	Relay Bracket	Relay Socket
211516	-	12	resistor	C2	50	-	4	2	2	removable	H, I
211100	3320	12	-	C1	70	-	4	2	2	removable	H, I
211692	-	12	resistor	C2	70	-	4	2	2	no	H, I
270240	-	12	-	C4	70	40	5	2	3	removable	N
211384	-	12	-	C1	80	-	4	2	2	yes	H, I
231180	-	12	-	C1	200	-	4	2	-	yes	-
210110	3336	12	resistor	C5	100	80	5	2	3	no	N

12V FLIP FLOP RELAYS

APPLICATION: alternative to push-pull switch.



6.8 12V Flip Flop Relays

Relays layout: Contact 30: + 12/24V; Contact 31: ground; Contact 15: pulse and 87A.

Code	Volt	Polarisation	N.O.	N.C.	Relay Bracket	Relay Socket
700326	12	+	25	20	removable	E
700418	12	-	25	20	removable	E

12V RELAYS SEALED



6.9 12V Relay Sealed

The KIT included Sealed Relay Socket

Code	Kit Code	Volt	Relay Electrical Diagram	N.O.	N.C.	Relay Contacts 6.3	Relay Bracket	Relay Socket
1/1393298/3	6766	12	C4	40	30	5	removable	M

THRESHOLD RELAY 12V

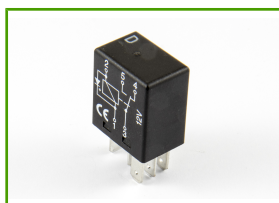


6.10 THRESHOLD RELAY 12V

Code	Volt	A	Notes
2140-N01	12	140	12,65V - 13,3V

Section n°6 - Relays & relay sockets

24V MICRO RELAYS



6.11 24V Micro Relays

DIMENSIONS: 26 x 15 x 23 mm

Code	Volt	Diode or Resistor	Relay Electrical Diagram	N.O.	N.C.	Total Relays Contacts	Relay contacts 4.8	Relay Contacts 6.3	Relay Socket
401007	24	diode	C3	10	-	4	2	2	A, B, C, D
401009	24	diode	C6	15	10	5	3	2	A, B, C, D
401005	24	resistor	C2	15	-	4	2	2	A, B, C, D
401008	24	resistor	C5	20	10	5	3	2	A, B, C, D

24V MINI RELAYS



6.12 24V Mini Relays

Code	Kit Code	Volt	Diode or Resistor	Relay Electrical Diagram	N.O.	N.C.	Total Relays Contacts	Relay Contacts 6.3	Relay Bracket	Relay Socket
214300	-	24	-	C11	10 + 10	-	5	5	removable	E, F, G, K, L
410007	-	24	-	C9	20	-	5	5	removable	E, F, G, K, L
410008	-	24	diode	C8	20	-	5	5	removable	E, F, G, K, L
410201	3325	24	-	C4	20	10	5	5	no	E, F, G, K, L
410202	-	24	resistor	C5	20	10	5	5	removable	E, F, G, K, L
410203	-	24	diode	C6	20	10	5	5	removable	E, F, G, K, L
411698	-	24	-	C1	40	-	4	4	no	E, F, G, K, L

24V RELAYS WITH FUSES



6.13 24V Relay with Fuse

Code	Kit Code	Volt	Relay Electrical Diagram	N.O.	Total Relays Contacts	Relay Contacts 6.3	Relay Bracket
410200	3330	24	C1	15	4	4	removable

24V POWER RELAYS



6.14 24V Relays

Relay 440080: 2 contacts 30/87= 6mA

Code	Kit Code	Volt	Relay Electrical Diagram	N.O.	N.C.	Total Relays Contacts	Relay Contacts 6.3	Relay contacts 9.5	Relay Bracket	Relay Socket
411100	3335	24	C1	40	-	4	2	2	removable	H, I
411394	-	24	C1	50	-	4	2	2	-	H, I
440430	-	24	C4	50	40	5	2	3	-	N
470070	-	24	C1	70	-	4	2	2	removable	H, I
440080	-	24	C1	80	-	4	2	-	yes	-

Section n°6 - Relays & relay sockets

24V FLIP FLOP RELAYS

APPLICATION: alternative to push-pull switch



6.15 24V Flip Flop Relays

Relays layout: Contact 30: + 12/24V; Contact 31: ground; Contact 15: pulse and 87A.

Code	Volt	Polarisation	N.O.	N.C.	Relay Bracket	Relay Socket
700306	24	+	15	10	removable	E
700419	24	-	15	10	removable	E

24V TIMED RELAYS



6.16 24V Timing Relay

NOTE: Multitimer is a timed relay used to switch the user component ON-OFF after a delay time selectable through 2 selectors on the cover. The delay it's programmable from 0.5 sec up to 6 h. The timed relay can be activated through a pulse and can be triggered by switch or push button.

Code	Volt	Relay Electrical Diagram	N.O.	Total Relays Contacts	Relay Contacts 6.3	Notes	Relay Socket
40405	24	C12	10	5	5	programmable time 0.5 sec. - 6h	E, F, G, K, L

SEALED RELAY 24V



6.17 Kit Relay 24V

Code	Kit Code	Volt	Accessory Contacts	Relay Electrical Diagram	N.O.	N.C.	Relay Bracket	Relay Socket
410204	7321	24	20314 + 400666	C4	20	10	yes	M

THRESHOLD RELAY 24V

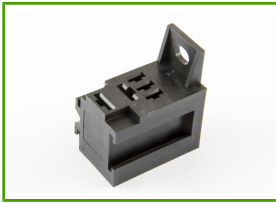


6.18 THRESHOLD RELAY 24V

Code	Volt	A	Notes
4140-N01	24	140	25,6V - 26,6V

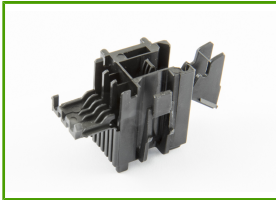
Section n°6 - Relays & relay sockets

MICRO RELAYS SOCKET



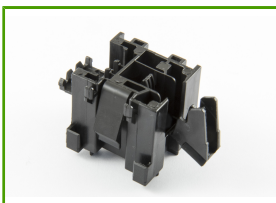
6.19 Micro Relays Socket

Code	Total Number of Ways	Kit Code	Color	Accessory Contacts	Relay Socket
1070004	5	6753	black	3 pz 5168 + 2 pz 42238/A	A



6.20 Micro Relays Front Fixing Socket

Code	Total Number of Ways	Color	Accessory Contacts	Relay Socket
282240/1	5	black	3 pz 927779/3 + 2 pz 160773/3	B



6.21 Micro Relays Modular Fixing Socket

Code	Total Number of Ways	Color	Accessory Contacts	Relay Socket
281988/2	5	black	3 pz 927779/3 + 2 pz 160773/3	C



6.22 Micro Relays Socket White with Secondary Lock

Code	Total Number of Ways	Kit Code	Accessory Contacts	Relay Socket
! 284106/1	5	6949	3 pz 5168 + 2 pz 42238/A	D

STANDARD RELAYS SOCKET



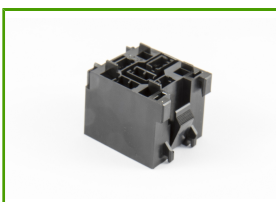
6.23 Relays and Flasher Unit Socket

Code	Total Number of Ways	Kit Code	Color	Accessory Contacts	Relay Socket
10485008	9	6754	black	4 pz 160367/2 + 5 pz 42238/A	E



6.24 5 Ways Power Relay Socket

Code	Total Number of Ways	Color	Accessory Contacts	Relay Socket
280289	5	white	5 pz 42238/A	F

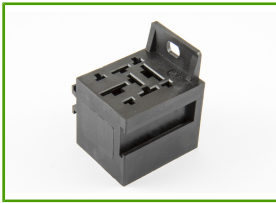


6.25 5 Ways Power Relay Socket for Positive Lock Contacts

Code	Total Number of Ways	Color	Accessory Contacts	Relay Socket
281856/2	5	black	5 pz 160773/3	G

! produced on request

Section n°6 - Relays & relay sockets



6.26 High Performance and Preheating Relay Diesel Socket

Code	Total Number of Ways	Kit Code	Color	Accessory Contacts	Relay Socket
10700005	9	6755	black	4 pz 160367/2 + 3 pz 42238/A + 2 pz	H



6.27 4 Ways Power Relay Socket

Code	Total Number of Ways	Color	Accessory Contacts	Relay Socket
281852/1	4	white	2 pz 160773/3 + 2 pz 182490/2	I



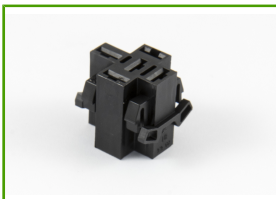
6.28 9 Ways Relay Socket

Code	Total Number of Ways	Color	Accessory Contacts	Relay Socket
282435/1	9	white	4 pz 927779/3 + 3 pz 927825/2 + 2 pz	J



6.29 Free Engine Relay Socket

Code	Total Number of Ways	Color	Accessory Contacts	Relay Socket
154746/2	5	black	5 pz 42238/A	K



6.30 5 Ways Relay Socket

Code	Total Number of Ways	Color	Accessory Contacts	Relay Socket
400372	5	black	5 pz 42238/A	L



6.31 Double Switch Power Relay Holder

Code	Color	Accessory Contacts	Relay Socket
10700017	black	4 pz 160367/2 + 2 pz 42238/A + 3 PZ	N



6.32 Relay Bracket

Code	Color
430	black

Section n°6 - Relays & relay sockets

SEALED RELAYS SOCKET

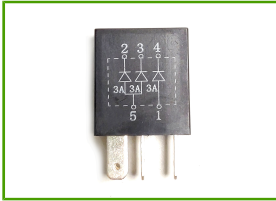


6.33 Relay Sealed Socket

* Use Single wire seal cod. 60992607

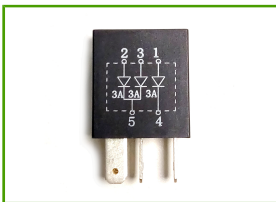
Code	Total Number of Ways	Color	Accessory Contacts	Relay Socket
10864040	5	black	3 pz 20314 + 2 pz 20317	M

DIODES BOX



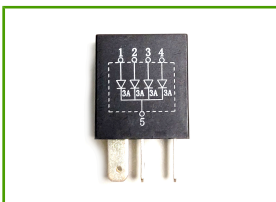
6.34 Diodes Box 3x3A OUT

Code	Volt	A	Relay Socket
546.10	1000	3 diodes of 3A OUT	A, B, C, D



6.35 Diodes Box 3X3A IN

Code	Volt	A	Relay Socket
546.30	1000	3 diodes of 3A IN	A, B, C, D



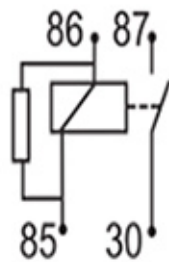
6.36 Diodes Box 4x3A IN

Code	Volt	A	Relay Socket
546.60	1000	4 diodes of 3A IN	A, B, C, D

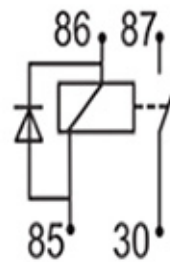
Section n°6 - Relays & relay sockets



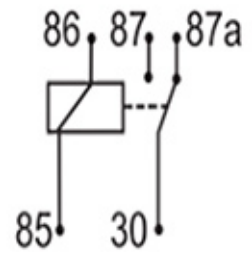
C1



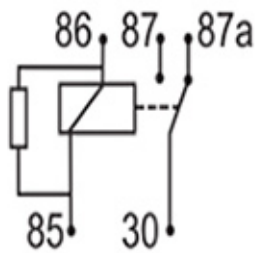
C2



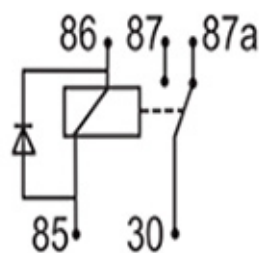
C3



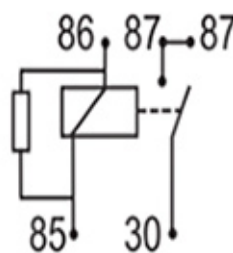
C4



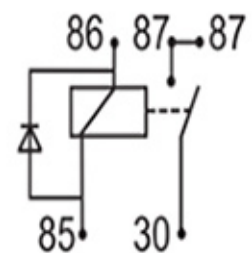
C5



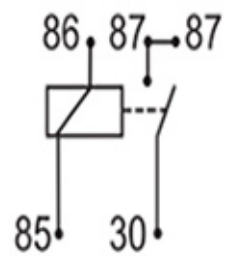
C6



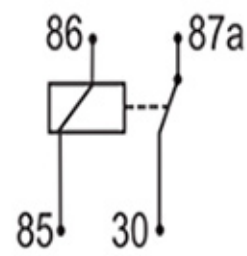
C7



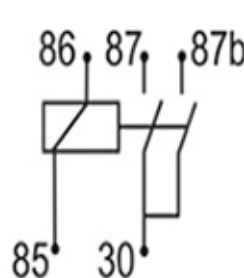
C8



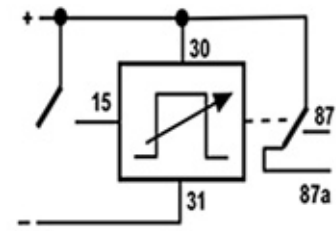
C9



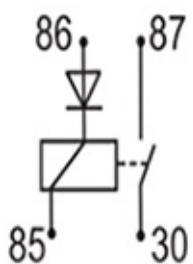
C10



C11

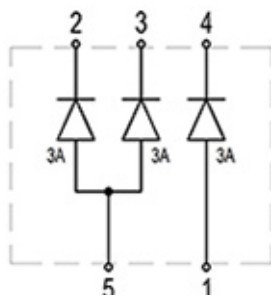


C12

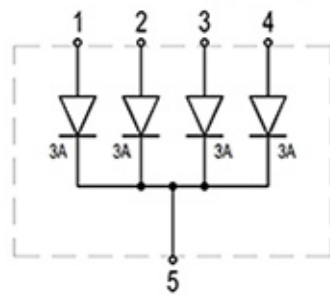


C14

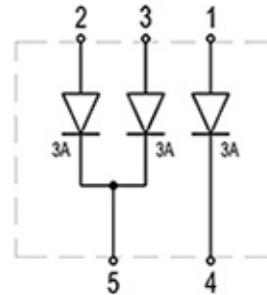
			OUT 1	OUT 2	
30	85	86	87	87a	MINI
(3)	(2)	(1)	(5)	(4)	MICRO



D1



D2



D3