



Section n °5

Fuse & fuse holders

LOW PROFILE FUSES AND FUSE HOLDERS	5.1
MICRO FUSES AND FUSE HOLDERS	5.3
MINI FUSES AND FUSE HOLDERS	5.6
ATO FUSES AND FUSE HOLDERS	5.12
MAXI COMPACT FUSES	5.27
MAXI FUSES AND FUSE HOLDERS	5.28
MIDI FUSES AND FUSE HOLDERS	5.33
CAL FUSES & FUSES HOLDER	5.36
MEGA BLADE FUSES AND FUSE HOLDERS	5.38
J CASE FUSES	5.43
MCASE SLOTTED FUSES	5.46
PAL FUSES	5.47
TORPEDO FUSES AND FUSES HOLDER	5.52
STRIP FUSES FOR GERMANS CARS	5.56

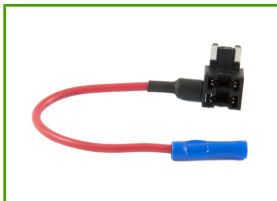
Section n°5 - Fuse & fuse holders

LOW PROFILE FUSES AND FUSE HOLDERS



5.1 LOW PROFILE Serie 295 Blade Fuses

Code	Industrial Code	Kit Code	Color	A	Fuse Holder
2822	FLP7005	4036	amber	5	A
2821	FLP7075	4036	brown	7,5	A
2818	FLP7010	4036	red	10	A
2819	FLP7015	4036	blue	15	A
2820	FLP7020	4036	yellow	20	A
2823	FLP7025	4036	white	25	A
2824	FLP7030	4036	green	30	A



5.2 MINI LOW PROFILE Serie Fuse Holder

Code	Type	Color	Fuse Holder
2848	shunting	black	A

MICRO FUSES AND FUSE HOLDERS



5.3 MICRO Blade Fuses

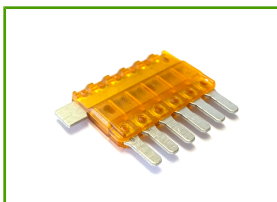
APPLICATION: american cars (es. FIAT Freemont, LANCIA Thema)

Code	Industrial Code	Kit Code	Color	A	Fuse Holder
2984	327010	4011	red	10	B
2985	327015	4011	blue	15	B
2986	327020	4011	yellow	20	B
2987	327025	4011	white	25	B
2988	327030	4011	green	30	B



5.4 MICRO Serie Fuse Holder

Code	Type	Wire Size Range (mm2)	Color	Notes	Fuse Holder
2947	shunting	1,5	black	Cable length 12 cm	B



5.5 MICRO 6 Out Fuses

Code	Color	A
F7605	yellow	5
F7675	brown	7,5

APPLICATION: Mercedes.

Section n°5 - Fuse & fuse holders

MINI FUSES AND FUSE HOLDERS



5.6 MINI Blade Fuses

NOTE: available mini blade fuses kit mix code 3301

Code	Industrial Code	Color	A	Resistor	Voltage Drop	Fuse Holder
2913	297002	grey	2	56	171	C, D, E, F
2872	297003	violet	3	34	153	C, D, E, F
2873	297004	pink	4	24	121	C, D, E, F
2874	297005	beige	5	18	129	C, D, E, F
2911	297075	brown	7,5	11	135	C, D, E, F
2875	297010	red	10	7,3	108	C, D, E, F
2876	297015	blue	15	4,5	98	C, D, E, F
2877	297020	yellow	20	3,2	96	C, D, E, F
2912	297025	white	25	2,3	86	C, D, E, F
2888	297030	green	30	1,8	87	C, D, E, F



5.7 Double exit MINI Blade Fuse

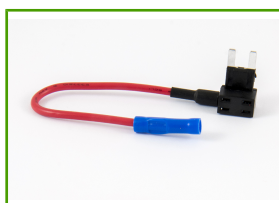
APPLICATION: NISSAN Juke, Micra.

Code	Industrial Code	Color	A
3010	337005	amber	5
3011	337075	brown	7,5
3012	337010	red	10
3013	337015	blue	15



5.8 MINI Blade Fuse holder

Code	Type	Wire Size Range (mm ²)	Color	Notes	Fuse Holder
2879	sealed	2	black	Cable length 20 + 20 cm	F



5.9 MINI Blade Fuse holder with Shunt

APPLICATION: for direct derivation from the fuse-holder control unit

Code	Type	Wire Size Range (mm ²)	Color	Notes	Fuse Holder
2981	shunting	1,5	black	Cable length 12 cm	E



5.10 MINI Fuse holder 1 Position

Code	Type	Color	Accessory Contacts	Fuse Holder
512	modular	black	929938/3	D



5.11 MINI Fuse holder 4 Positions with Protective Cap

Code	Total Number of Ways	Type	Color	Accessory Contacts	Fuse Holder
7003	4	modular	black	927781/3	C

Section n°5 - Fuse & fuse holders

ATO FUSES AND FUSE HOLDERS



5.12 ATO Blade Fuses

NOTE: available ATO blade fuses kit mix code 3302

Code	Industrial Code	Color	A	Resistor	Voltage Drop	Fuse Holder
2845	287001	black	1	123	176	G, H, I, J, K, L, M, N, O, P, Q, R, S, T, U, V, ZC
2846	287002	grey	2	50	141	G, H, I, J, K, L, M, N, O, P, Q, R, S, T, U, V, ZC
2850	287003	violet	3	31	137	G, H, I, J, K, L, M, N, O, P, Q, R, S, T, U, V, ZC
2851	287004	pink	4	23	136	G, H, I, J, K, L, M, N, O, P, Q, R, S, T, U, V, ZC
2852	287005	beige	5	18	128	G, H, I, J, K, L, M, N, O, P, Q, R, S, T, U, V, ZC
2853	287075	brown	7,5	11	116	G, H, I, J, K, L, M, N, O, P, Q, R, S, T, U, V, ZC
2854	287010	red	10	7,7	109	G, H, I, J, K, L, M, N, O, P, Q, R, S, T, U, V, ZC
2855	287015	blue	15	4,8	102	G, H, I, J, K, L, M, N, O, P, Q, R, S, T, U, V, ZC
2856	287020	yellow	20	3,3	98	G, H, I, J, K, L, M, N, O, P, Q, R, S, T, U, V, ZC
2857	287025	white	25	2,5	92	G, H, I, J, K, L, M, N, O, P, Q, R, S, T, U, V, ZC
2858	287030	green	30	1,9	84	G, H, I, J, K, L, M, N, O, P, Q, R, S, T, U, V, ZC
2843	287035	green blue	35	1,6	87	G, H, I, J, K, L, M, N, O, P, Q, R, S, T, U, V, ZC
2844	287040	orange	40	1,4	96	G, H, I, J, K, L, M, N, O, P, Q, R, S, T, U, V, ZC



5.13 ATO vertical contact for modular Fuse Holder

With cover and bracket

Code	Type	Color	Accessory Contacts	Fuse Holder
946	modular	black	181904/1	G



5.14 ATO Blade Fuse holders 1 Position with 2 Contacts

NOTE: the contacts are inside the kit 6353.

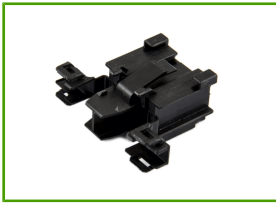
Code	Kit Code	Type	Accessory Contacts	Fuse Holder
500016	6353	modular	91001 (1,50-2,50 mmq) - 3608 (3-6 mmq)	K



5.15 ATO Blade Fuse holder

Code	Type	Color	Accessory Contacts	Fuse Holder
9525	modular	black	181904/1	H

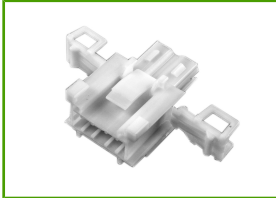
Section n°5 - Fuse & fuse holders



5.16 ATO Blade Fuse holders 1 Position

Extraction tool code 21012

Code	Type	A	Accessory Contacts	Fuse Holder
281990/2	modular	16	5186	I



5.17 ATO Blade Fuse holders White

Code	Type	A	Accessory Contacts	Fuse Holder
282159/1	modular	30	927825/1 and 963714/1	J



5.18 Sealed Fuse Holder

Code	Type	Color	Accessory Contacts	Fuse Holder
7700	sealed	black	5604 + single wire seal	ZC



5.19 ATO modular sealed fuse holder with crimping contact

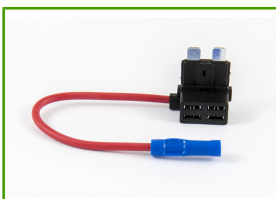
APPLICATION: engine dept.

Code	Kit Code	Accessory Contacts	Fuse Holder
012/3203/00	6969	011/3201/00 + single wire seal	O



5.20 ATO Blade Fuse holder sealed

Code	Type	Wire Size Range (mm ²)	Color	Notes	Fuse Holder
2847	sealed	1,5	black	Cable length 10 + 10 cm	P
445009	sealed	2,5	orange	Cable length 10 + 10 cm	P



5.21 ATO Blade Fuse holder

APPLICATION: shunting for fuseboxes

Code	Type	Wire Size Range (mm ²)	Color	Notes	Fuse Holder
2982	shunting	1,5	black	Cable length 12 cm	M



5.22 Sealed Blade Fuse holders 2 Positions

Code	Type	Color	Height	Notes	Fuse Holder
61006	sealed	black	46,5	2 positions 2 positions	R



5.23 ATO Blade Fuse holders 4 Positions

NOTE: the contacts are inside the kit 6796.

Code	Total Number of Ways	Kit Code	Wire Size Range (mm ²)	Accessory Contacts	Fuse Holder
17941000000	4	6796	1,50 - 2,50	20560	N

Section n°5 - Fuse & fuse holders



5.24 Sealed Blade Fuse holders 4 Positions

Code	Type	Color	Height	Notes	Fuse Holder
61007	sealed	black	46,5	4 positions	S



5.25 Sealed Blade Fuse holders 6 Positions

Code	Type	Color	Height	Notes	Fuse Holder
61008	sealed	black	46,5	6 positions	V



5.26 ATO Blade Fuse holders 8 Positions

With transparent cover and topping.

Code	Total Number of Ways	Type	Wire Size Range (mm ²)	Accessory Contacts	Fuse Holder
67111	8	sealed	1,00 - 2,50	42238/2	Q

MAXI COMPACT FUSES



5.27 Maxi Compact Fuses

Code	Industrial Code	Color	A
3021	F9020-63	yellow	20
3022	F9025-63	grey	25
3023	F9030-63	green	30
3024	F9035-63	light blue	35
3025	F9040-63	orange	40
3026	F9050-63	red	50
3027	F9060-63	blue	60

Section n°5 - Fuse & fuse holders

MAXI FUSES AND FUSE HOLDERS



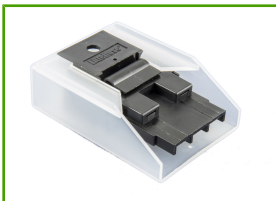
5.28 MAXI Blade Fuses

Code	Industrial Code	Color	A	Resistor	Voltage Drop	Fuse Holder
2914	299020	yellow	20	3,1	76	V, W, X, ZC
2954	299025	grey	25	2,4	75	V, W, X, ZC
2868	299030	green	30	2	77	V, W, X, ZC
2869	299040	orange	40	1,4	75	V, W, X, ZC
2865	299050	red	50	1,1	73	V, W, X, ZC
2866	299060	blue	60	0,9	77	V, W, X, ZC
2870	299070	beige	70	0,7	73	V, W, X, ZC
2871	299080	white	80	0,6	79	V, W, X, ZC
2842	-	violet	100	2	77	V, W, X, ZC



5.29 MAXI MTA Version Fuse holder

Code	Type	Color	Accessory Contacts	Fuse Holder
2948	modular	black	1107660	ZC



5.30 MAXI Blade Fuse holders

With protection cover, contacts e screws.

Code	Type	Color	Accessory Contacts	Fuse Holder
2867	modular	black	5162	V



5.31 MAXI Blade Fuse holders Sealed

With transparent cover and topping.

Code	Type	Color	A	Accessory Contacts	Fuse Holder
2945	sealed/modular	black	80	962932/1 + single wire seal 868905/1	W

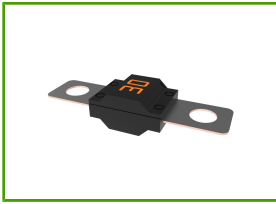


5.32 MAXI Fuse in Line Fuse holder sealed with Protective Cap

Code	Type	Color	A	Notes	Fuse Holder
2946	sealed	black	60	Cable length 15 + 15 cm	X

Section n°5 - Fuse & fuse holders

MIDI FUSES AND FUSE HOLDERS



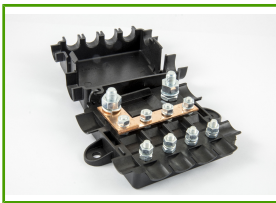
5.33 MIDI Fuse

Code	Industrial Code	Color	A	Resistor	Voltage Drop	Fuse Holder
2956	498030	pink	30	2,14	65	Y, ZA
2940	498040	green	40	1,3	65	Y, ZA
2915	498050	red	50	1,04	65	Y, ZA
2941	498060	yellow	60	0,87	68	Y, ZA
2942	498070	brown	70	0,72	70	Y, ZA
2916	498080	white	80	0,56	58	Y, ZA
2917	498100	blue	100	0,45	60	Y, ZA
2943	498125	orange	125	0,4	71	Y, ZA
2944	498150	white	150	0,33	71	Y, ZA
2957	498200	violet	200	0,25	77	Y, ZA



5.34 MIDI Fuse Holder

Code	Color	Raw Material	Accessory Contacts	Fuse Holder
2909	black	thermoplastic with glass filling	Ring Tongues Hole 5,2	Y

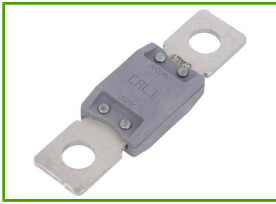


5.35 Fuse Holder Electrical Junction Box

Code	Color	Raw Material	Notes	Fuse Holder
2910	black	PA 6.6	fuse holder with 1 MEGA fuse in and 4 MIDI fuses out	ZA

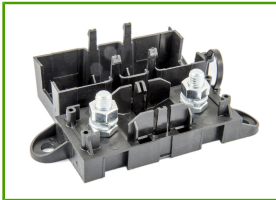
Section n°5 - Fuse & fuse holders

CAL FUSES & FUSES HOLDER



5.36 CAL Fuses

Code	Kit Code	Type	Color	A	Fuse Holder
2953	7400	CAL1	grey	400-1000	Z
2949	7400	CAL2	black	400-1200	Z
2970	7400	CAL3	red	500-1200	Z
2973	7400	CAL4	brown	600-1200	Z
2974	7400	CAL5	dark grey	700-1200	Z



5.37 CAL Fuse Holder

Code	Color	Raw Material	Accessory Contacts	Fuse Holder
2908	black	thermoplastic with glass filling	hole 8.2	Z

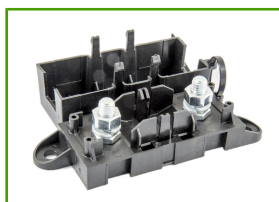
Section n°5 - Fuse & fuse holders

MEGA BLADE FUSES AND FUSE HOLDERS



5.38 MEGA Fuse

Code	Industrial Code	Color	A	Resistor	Voltage Drop	Fuse Holder
2960	298080	red	80	0,65	87	Z, ZA, ZB
2920	298100	yellow	100	0,55	87	Z, ZA, ZB
2921	298125	green	125	0,43	80	Z, ZA, ZB
2922	298150	orange	150	0,35	92	Z, ZA, ZB
2923	298175	white	175	0,27	86	Z, ZA, ZB
2924	298200	blue	200	0,26	83	Z, ZA, ZB
2925	298225	beige	225	0,23	82	Z, ZA, ZB
2926	298250	pink	250	0,19	82	Z, ZA, ZB
2961	298300	grey	300	0,17	74	Z, ZA, ZB
2962	298350	green	350	0,15	68	Z, ZA, ZB
2963	298400	violet	400	0,13	64	, ZBZ, ZA
2964	298450	orange	450	0,11	60	Z, ZA, ZB
2965	298500	black	500	0,09	58	Z, ZA, ZB



5.39 MEGA Fuse Holder

Code	Color	Raw Material	Accessory Contacts	Fuse Holder
2908	black	thermoplastic with glass filling	hole 8.2	Z



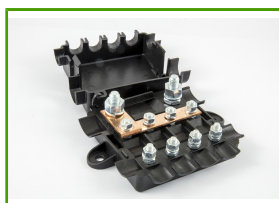
5.40 MEGA Fuse Holder Sealed

Code	Total Number of Ways	Color	Fuse Holder
92013	1	black	ZB



5.41 MEGA Fuse Holder with Battery Clip

Code	Total Number of Ways	Color	Notes
92011	1	black	Pressofusione a Destra



5.42 Fuse Holder Electrical Junction Box

Code	Color	Raw Material	Notes	Fuse Holder
2910	black	PA 6.6	fuse holder with 1 MEGA fuse in and 4 MIDI fuses out	ZA

Section n°5 - Fuse & fuse holders

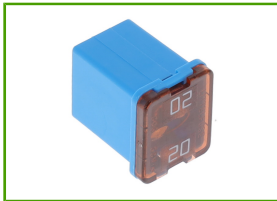
J CASE FUSES



5.43 MICRO J CASE Fuses

APPLICATION: USA cars.

Code	Industrial Code	Kit Code	Color	A
3001	695015	4037	grey	15
3003	695020	4037	blue	20
3004	695025	4037	white	25
2983	13815956	-	pink	30
3005	695040	4037	green	40



5.44 Low Profile J CASE CARTRIDGE

Code	Industrial Code	Color	A	Resistor	Voltage Drop
2966	895020	blue	20	4,86	125
2967	895025	white	25	-	100
2968	895030	pink	30	2,45	100
2969	895040	green	40	1,52	100
2971	895050	red	50	1,18	100
2972	895060	yellow	60	0,95	100



5.45 J CASE CARTRIDGE Fuses

NOTE: can be used to replace the 293.8 series

Code	Industrial Code	Color	A	Resistor	Voltage Drop
2935	495020	blue	20	4,86	125
2936	495030	pink	30	2,45	100
2937	495040	green	40	1,52	100
2938	495050	red	50	1,18	100
2939	495060	yellow	60	0,95	100

MCASE SLOTTED FUSES

APPLICATION: NISSAN, FORD and JEEP.



5.46 MCASE SLOTTED Fuses

Code	Kit Code	Color	A
3014	4022	grey	15
3015	4022	blue	20
3016	4022	white	25
3017	4022	pink	30
3018	4022	green	40
3019	4022	red	50
3020	4022	yellow	60

Section n°5 - Fuse & fuse holders

PAL FUSES



5.47 PAL Fuses 293 Series Female Plug-in for Japanese Cars

Code	Industrial Code	Color	A
2890	293020	blue	20
2859	293030	pink	30
2860	293040	green	40
2891	293050	red	50
2861	293060	yellow	60



5.48 PAL Fuses 293 Series Female Plug-in

Code	Industrial Code	Type	Color	A
2885	293525	MINI	brown	25
2886	293530	MINI	green	30
2882	293545	STD	red	45
2883	293565	STD	black	65
2884	293575	STD	grey	75



5.49 PAL Fuses 283 Series Male Plug-in

Code	Industrial Code	Color	A
2901	283030	pink	30
2902	283040	green	40
2903	283050	red	50
2904	283060	yellow	60
2931	283070	grey	70
2905	283080	black	80
2932	283100	blue	100
2906	283120	beige	120



5.50 PAL Fuses 295 Series Male Plug-in

Code	Industrial Code	Color	A
2918	295030	pink	30
2919	295040	green	40
2927	295050	red	50
2899	295060	yellow	60
2928	295070	grey	70
2900	295080	black	80
2929	295100	blue	100
2930	295120	beige	120



5.51 PAL Fuses 294 Series Male Plug-in

Code	Industrial Code	Color	A
2862	294030	pink	30
2894	294040	green	40
2895	294050	red	50
2863	294060	yellow	60
2896	294070	grey	70
2864	294080	black	80
2897	294100	blue	100
2898	294120	beige	120

Section n°5 - Fuse & fuse holders

TORPEDO FUSES AND FUSES HOLDER



5.52 Fuse 214 Series Torpedo Type DIN Standard

Code	Industrial Code	Color	A	Fuse Holder
781628/3	214005	yellow	5	ZB
781628/1	-	white	8	ZB
781628/2	214016	red	16	ZB
781628/4	214025	blue	25	ZB



5.53 Torpedo Fuse Holder

Bayonet closing

Code	Color	Accessory Contacts	Fuse Holder
945	black	181904/1	ZB



5.54 Car Glass Fuse 5 x 20

Code	A
520/05	0,5
520/1	1
520/2	2
520/3	3
520/4	4
520/5	5
520/10	10



5.55 Car Glass Fuse for 6,3 x 32

Code	A
6332/2	2
6332/5	5
6332/10	10
6332/16	16
6332/20	20
6332/25	25

STRIP FUSES FOR GERMANS CARS



5.56 Strip Fuses

Available Kit 21100.

Code	A
2989	30
2990	40
2991	50
2992	60
2993	70
2994	80
2995	100
2996	110
2997	125
2998	150

! produced on request