



## Section n °3

# Unsealed connectors & contacts

<b>HC3 SERIES CONNECTORS &amp; CONTACTS</b>	3.1	<b>CP 06 SERIES CONNECTORS &amp; CONTACTS</b>	3.3
<b>CPC SERIES CONNECTORS &amp; CONTACTS</b>	3.5	<b>MICRO FIT CONNECTORS &amp; CONTACTS</b>	3.12
<b>MQS SERIES CONNECTORS &amp; CONTACTS</b>	3.14	<b>MTS SERIES CONNECTORS &amp; CONTACTS</b>	3.20
<b>PITCH ECONOMY POWER CONNECTORS &amp; CONTACTS</b>	3.22	<b>0,40 SERIES CONNECTORS &amp; CONTACTS</b>	3.24
<b>MINI FIT SERIES CONNECTORS &amp; CONTACTS</b>	3.28	<b>DUOTWIN SERIES CONNECTORS</b>	3.32
<b>CAR STEREO CONNECTORS &amp; CONTACTS</b>	3.38	<b>NEW GENERATION CAR STEREO CONNECTORS</b>	3.42
<b>0,70 SERIES CONNECTORS &amp; CONTACTS</b>	3.44	<b>0,70 SERIES CONNECTORS &amp; CONTACTS II GENERATION</b>	3.48
<b>MIC SERIES CONNECTORS &amp; CONTACTS</b>	3.52	<b>MCON 1,5 + AMP MCP 2,8 SERIES CONNECTORS &amp; CONTACTS</b>	3.56
<b>JUNIOR POWER TIMER CONNECTORS AND CONTACT SERIES</b>	3.62	<b>JPT 2,8 CONNECTORS &amp; CONTACTS</b>	3.66
<b>MCON MIXED SERIES CONNECTORS &amp; CONTACTS</b>	3.70	<b>CONNECTORS &amp; CONTACTS FOR TACHOGRAPH</b>	3.74
<b>MIC IV &amp; MCP 2,8 SERIES CONNECTORS &amp; CONTACTS</b>	3.76	<b>AMP MCP 2,8 CONNECTORS AND TERMINALS</b>	3.78

<b>JUNIOR &amp; STANDARD POWER TIMER SERIES CONNECTORS &amp; CONTACTS</b>	3.80	<b>SICMA SERIES CONNECTORS &amp; CONTACTS</b>	3.84
<b>NSCC SERIES CONNECTORS &amp; CONTACTS</b>	3.89	<b>NSCC 1,5 UCC 2,8 SERIES CONNECTORS &amp; CONTACTS</b>	3.93
<b>GT 150/280 SERIES CONNECTORS &amp; CONTACTS</b>	3.99	<b>HSG SERIES CONNECTORS &amp; CONTACTS</b>	3.101
<b>YAZAKI SERIES 187 CONNECTORS &amp; CONTACTS</b>	3.103	<b>OBD II SERIES CONNECTORS &amp; CONTACTS</b>	3.105
<b>OBD II 24V SERIES CONNECTOR &amp; CONTACT</b>	3.109	<b>DFK3 CONNECTORS &amp; CONTACTS SERIES</b>	3.111
<b>G&amp;H-AFK SERIES CONNECTORS &amp; CONTACTS</b>	3.113	<b>F800 POWER SERIES CONNECTORS &amp; CONTACTS</b>	3.115
<b>ANDERSON SERIES CONNECTORS</b>	3.119	<b>DIN CONNECTORS</b>	3.123
<b>FUSEHOLDERS &amp; RELAY SOCKET CONTACTS</b>	3.125		

---

## Section n°3 - Unsealed connectors & contacts

### HC3 SERIES CONNECTORS & CONTACTS

APPLICATION: electric engine and electronic devices.



#### 3.1 HC3 Series Receptacle Housing

Code	Total Number of Ways	Industrial Code	Kit Code	Color	Raw Material
9252	5	MHS05023WH00	7071	white	PA 6.6



#### 3.2 HC3 Series Receptacle Contact Diam 1,16 mm

Code	Industrial Code	Wire Size Range (mm <sup>2</sup> )	Raw Material	Extraction Tool	Hand Tool
9248	HC3FBS2PT	0,75 - 1,00	Bz Ph Sn	87025	3991

### CP 06 SERIES CONNECTORS & CONTACTS

APPLICATION: loudspeakers and dash board.



#### 3.3 CP 06 Series Receptable Housing

Code	Total Number of Ways	Kit Code	Color	Raw Material
51001EV3M1	3	6683	black	PA 6.6



#### 3.4 CP 06 Series Receptable Contact

Code	Industrial Code	Wire Size Range (mm <sup>2</sup> )	Raw Material	Extraction Tool	Hand Tool
20475	2420399E4201H	0,50 - 0,75	Bz Ph Sn	97046	3995 + 3992



# Section n°3 - Unsealed connectors & contacts

## CPC SERIES CONNECTORS & CONTACTS

APPLICATION: diagnostics and racing cars.



### 3.5 CPC Series Receptacle Housing Panel Mounting

Code	Total Number of Ways	Kit Code	Color	Raw Material	Contact Size
182921/1	4	6714	black	polyamide	11
182641/1	14	6715	black	polyamide	17
182920/1	37	6716	black	polyamide	23



### 3.6 CPC Series Receptacle Housing

Code	Total Number of Ways	Kit Code	Color	Raw Material	Contact Size
182647/1	4	6717	black	polyamide	11
182645/1	9	6718	black	polyamide	13
182642/1	16	6719	black	polyamide	17
182923/1	37	6720	black	polyamide	23



### 3.7 Cable Clamps for CPC Connectors

Code	Industrial Code	Color	Raw Material	Contact Size
182658/1	1/206062/6	black	polyamide	11
182663/1	-	black	polyamide	13
182655/1	-	black	polyamide	17
182652/1	-	black	polyamide	23



### 3.8 CPC Series Tab Housing

Code	Total Number of Ways	Kit Code	Color	Raw Material	Contact Size
182651/1	4	6711	black	polyamide	11
182649/1	14	6712	black	polyamide	17
182926/1	37	6713	black	polyamide	23



### 3.9 CPC Series Tab Housing Panel Mounting

Code	Total Number of Ways	Kit Code	Color	Raw Material	Contact Size
182917/1	4	6721	black	polyamide	11
182922/1	9	6722	black	polyamide	13
182916/1	16	6723	black	polyamide	17
182918/1	37	6724	black	polyamide	23



### 3.10 III+ Series Receptacle Contact

Code	Industrial Code	Wire Size Range (mm <sup>2</sup> )	Raw Material	Extraction Tool	Hand Tool
163084/1	66100/7	0,75 - 1,50	Cu Fe Sn	0,75 - 1,50	3991

### 3.11 III+ Series Tab Contact

Code	Industrial Code	Wire Size Range (mm <sup>2</sup> )	Raw Material	Extraction Tool	Hand Tool
163082/1	66098/7	0,75 - 1,50	Cu Fe Sn	87035	3991

! produced on request

## Section n°3 - Unsealed connectors & contacts



### MICRO FIT CONNECTORS & CONTACTS



#### 3.12 MICRO FIT Receptacle Housing

Code	Total Number of Ways	Kit Code	Color	Raw Material
43025-1600	16	7247	black	polyester



#### 3.13 MINI FIT Female Contact

Code	Wire Size Range (mm2)	Raw Material
43030-0007	0,25 - 0,50	tin-plated brass

### MQS SERIES CONNECTORS & CONTACTS

APPLICATION: ABS sensors, anti yaw, headlight control, motorized throttles.



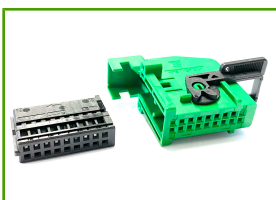
#### 3.14 MQS Receptacle Housing

Code	Total Number of Ways	Kit Code	Color	Raw Material
1/1718346/1	3	6522	black	PA 6.6



#### 3.15 MQS Receptacle Housing

Code	Total Number of Ways	Kit Code	Color	Raw Material
1745000/3	8	7059	black	PA 6.6



#### 3.16 MQS Receptacle Housing

Code	Total Number of Ways	Color	Raw Material
7204	18	black	PA 6.6

! produced on request

## Section n°3 - Unsealed connectors & contacts



### 3.17 MQS Tab Housing

Code	Total Number of Ways	Kit Code	Color	Raw Material
1/968699/1	2	6523	black	PA 6.6



### 3.18 MQS Receptacle Contact

Code	Industrial Code	Wire Size Range (mm <sup>2</sup> )	Raw Material	Extraction Tool	Hand Tool
3230	5/928999/1	0,25 - 0,50	Cu Fe Sn	25046, 88069	3995 + 3981
144969/2	-	0,25 - 0,50	AU	88069	3995 + 3981
3235	5/963715/1	0,50-0,75	Cu Fe Sn	88069	3995 + 3981



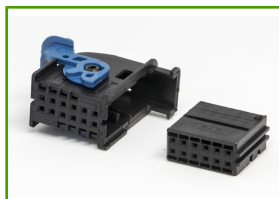
### 3.19 MQS Tab Contact

Code	Industrial Code	Wire Size Range (mm <sup>2</sup> )	Raw Material	Extraction Tool	Hand Tool
3400	1/928918/1	0,25 - 0,50	Cu Fe Sn	88069	3995 + 3981

## Section n°3 - Unsealed connectors & contacts

### MTS SERIES CONNECTORS & CONTACTS

APPLICATION: info entertainment for FCA cars.



#### 3.20 MTS Series Receptacle Housing & Cover

Code	Total Number of Ways	Kit Code	Color
13553389	12	6993	black



#### 3.21 MTS Receptable Contacts

Code	Industrial Code	Wire Size Range (mm <sup>2</sup> )	Raw Material	Extraction Tool	Hand Tool
3230	5/928999/1	0,25 - 0,50	Cu Fe Sn	25046, 88069	3995 + 3981

### PITCH ECONOMY POWER CONNECTORS & CONTACTS



#### 3.22 ECONOMY POWER Series Receptacle Housing

Code	Total Number of Ways	Kit Code	Color	Raw Material
1/1123722/8	8	7327	white	PA 6.6



#### 3.23 Female Contact ECONOMY POWER

Code	Wire Size Range (mm <sup>2</sup> )	Raw Material
1123721/1	0,50 - 1,50	Bz Ph Sn

# Section n°3 - Unsealed connectors & contacts

## 0,40 SERIES CONNECTORS & CONTACTS

APPLICATION: dashboard and info entertainment.



### 3.24 0,40 Series Receptacle Housing

Code	Total Number of Ways	Kit Code	Color	Raw Material
! 174056/2	2	6472	black	pbt
174966/2	4	6473	black	pbt
174044/2	8	6474	black	pbt



### 3.25 0,40 Series Tab Housing

Code	Total Number of Ways	Kit Code	Color	Raw Material
! 174057/2	2	6478	black	pbt
174967/2	4	6479	black	pbt



### 3.26 Receptable Contacts for 0,40 Series Housings

Code	Industrial Code	Wire Size Range (mm <sup>2</sup> )	Raw Material	Extraction Tool	Hand Tool
175062/1	173681/1	0,25 - 0,50	tin-plated brass	25046	3991



### 3.27 Tab Contacts for 0,40 Series Housings

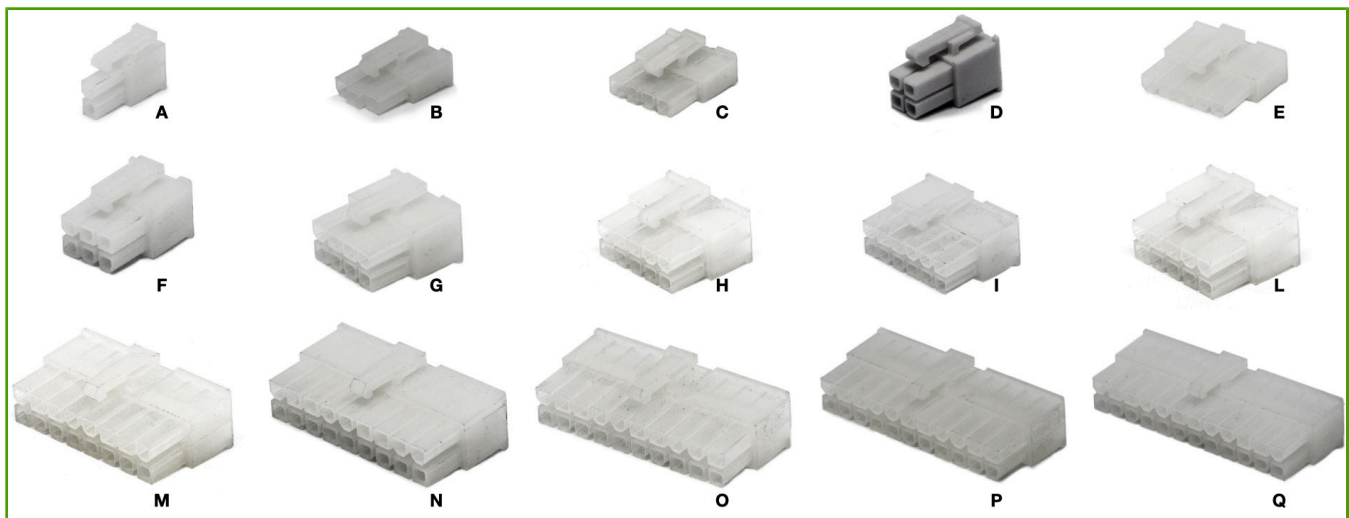
Code	Industrial Code	Wire Size Range (mm <sup>2</sup> )	Raw Material	Extraction Tool	Hand Tool
175063/1	173682/1	0,25 - 0,50	tin-plated brass	25046	3991

! produced on request

# Section n°3 - Unsealed connectors & contacts

## MINI FIT SERIES CONNECTORS & CONTACTS

### 3.28 Receptacle Housing MINI FIT Series



Code	Total Number of Ways	Industrial Code	Type	Color	Raw Material	Image
3350	2	794954/2	single line	white	UL 94-V2	A
3355	3	1586105/3	single line	white	UL 94-V2	B
3424	4	794954/4	single line	white	UL 94-V2	C
3360	4	794954/4	double row	white	UL 94-V2	D
3365	5	1586022/5	single line	white	UL 94-V2	E
3370	6	794954/6	double row	white	UL 94-V2	F
3375	8	794954/8	double row	white	UL 94-V2	G
3376	10	1/794954/0	double row	white	UL 94-V2	H
3377	12	1/794954/2	double row	white	UL 94-V2	I
3378	14	1/794954/4	double row	white	UL 94-V2	L
3379	16	1/794954/6	double row	white	UL 94-V2	M
3382	18	1/794954/8	double row	white	UL 94-V2	N
3383	20	2/794954/0	double row	white	UL 94-V2	O
3384	22	2/794954/2	double row	white	UL 94-V2	P
3387	24	2/794954/4	double row	white	UL 94-V2	Q

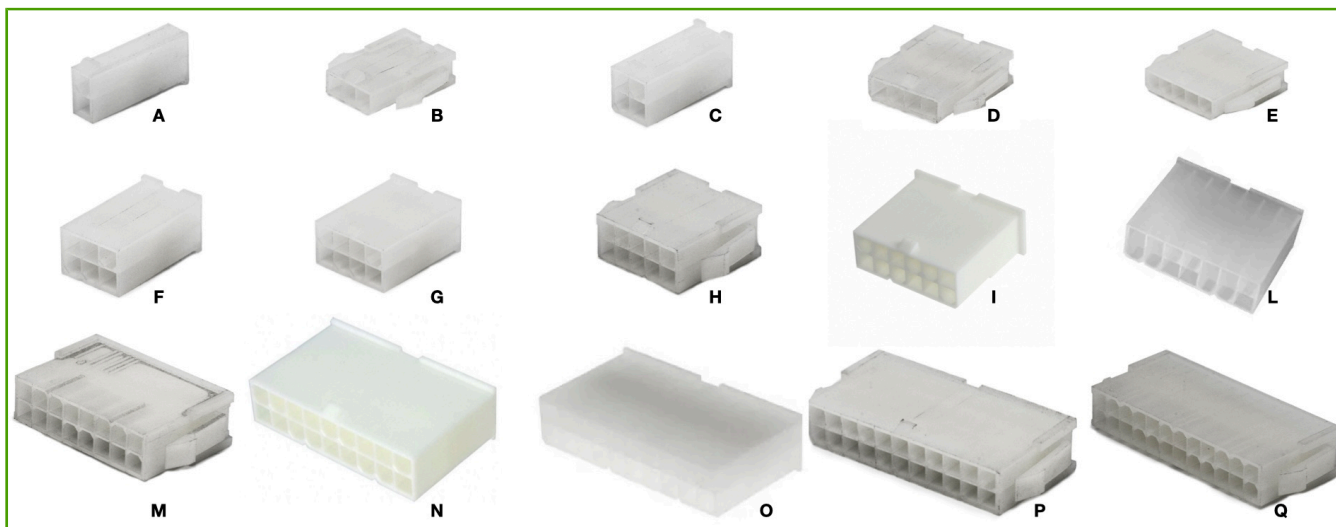


### 3.29 MINI FIT Receptacle Contacts

Code	Industrial Code	Wire Size Range (mm <sup>2</sup> )	Raw Material	Extraction Tool	Hand Tool
3381	794956/3	0,25 - 0,75	Bz Ph Sn	94210	3991
3380	794956/1	0,50 - 1,50	Bz Ph Sn	94210	3991

## Section n°3 - Unsealed connectors & contacts

### 3.30 Tab Housing MINI FIT Series



Code	Total Number of Ways	Industrial Code	Type	Color	Raw Material	Image
3390	2	1586000/2	single line	white	UL 94-V2	A
3391	3	1586103/3	single line	white	UL 94-V2	B
3392	4	1586000/4	double row	white	UL 94-V2	C
3425	4	1586024/4	single line	white	UL 94-V2	D
3393	5	1586024/5	single line	white	UL 94-V2	E
3394	6	1586000/6	double row	white	UL 94-V2	F
3395	8	1586000/8	double row	white	UL 94-V2	G
3420/C	10	1/1586000/0	double row	white	UL 94-V2	H
3421	12	1/1586000/2	double row	white	UL 94-V2	I
3426	14	1/1586000/4	double row	white	UL 94-V2	L
3422	16	1/1586000/6	double row	white	UL 94-V2	M
3423	18	1/1586000/8	double row	white	UL 94-V2	N
3427	20	2/1586000/0	double row	white	UL 94-V2	O
3428	22	2/1586000/2	double row	white	UL 94-V2	P
3429	24	2/1586000/4	double row	white	UL 94-V2	Q



### 3.31 MINI FIT Tab Contacts

Code	Industrial Code	Wire Size Range (mm <sup>2</sup> )	Raw Material	Extraction Tool	Hand Tool
3385	794955/1	0,50 - 1,50	Bz Ph Sn	132225	3991

## Section n°3 - Unsealed connectors & contacts

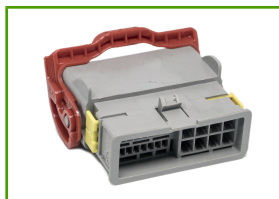
### DUOTWIN SERIES CONNECTORS

APPLICATION: FIAT Ducato junction from body to chassis.



#### 3.32 DUOTWIN Receptacle Housing

Code	Total Number of Ways	Kit Code	Color
17212480	24	6697	grey



#### 3.33 DUOTWIN Tab Housing

Code	Total Number of Ways	Kit Code	Color	Raw Material
17212481	24	6696	grey	pbt



#### 3.34 MQS Receptacle Contact

Code	Industrial Code	Wire Size Range (mm2)	Raw Material	Extraction Tool	Hand Tool
3230	5/928999/1	0,25 - 0,50	Cu Fe Sn	25046, 88069	3995 + 3981



#### 3.35 ST Receptacle Contact

Code	Wire Size Range (mm2)	Raw Material	Extraction Tool	Hand Tool
60012841	2,50	Bz Ph Sn	88040	3987



#### 3.36 0,64 DUOTWIN Tab Housing

Code	Wire Size Range (mm2)	Raw Material	Extraction Tool	Hand Tool
60181031	1,00	Bz Ph Sn	25046	3995 + 3981



#### 3.37 ST Tab Housing

Code	Wire Size Range (mm2)	Raw Material	Extraction Tool	Hand Tool
60110641	2,5	Bz Ph Sn	88040	3987



## Section n°3 - Unsealed connectors & contacts

### CAR STEREO CONNECTORS & CONTACTS



#### 3.38 Receptacle Housing for Info-Entertainment

Code	Total Number of Ways	Color	Raw Material
144172/2	8	black	PA 6.6
144172/3	8	white	PA 6.6



#### 3.39 Tab Housing for Info-Entertainment

Code	Total Number of Ways	Kit Code	Color	Raw Material
106455/3	8	6685	grey	PA 6.6
106455/4	8	6685	brown	PA 6.6



#### 3.40 Car Stereo Female Contact

Code	Industrial Code	Wire Size Range (mm <sup>2</sup> )	Raw Material	Extraction Tool	Hand Tool
927779/3	927779/3	0,50 - 1,00	Bz Ph Sn	88040	3991

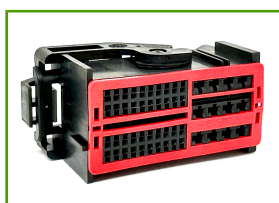


#### 3.41 JPT 2,8 Tab Contacts

Code	Industrial Code	Wire Size Range (mm <sup>2</sup> )	Raw Material	Extraction Tool	Hand Tool
5157	160743/4	0,75 - 2,50	Bz Ph Sn	88040, 88074	3987

### NEW GENERATION CAR STEREO CONNECTORS

APPLICATION: FCA and IVECO GROUPS CAR STEREO



#### 3.42 Car Stereo Connector

Code	Total Number of Ways	Kit Code	Color	Raw Material
776932/1	52	7243	black	polyamide



#### 3.43 Car Audio Female Contact

Code	Wire Size Range (mm <sup>2</sup> )	Raw Material	Extraction Tool	Hand Tool
3211	1,50 - 2,50	sn	25046	3991
3212	0,50 - 0,75	sn	25046	3991

# Section n°3 - Unsealed connectors & contacts

## 0,70 SERIES CONNECTORS & CONTACTS

APPLICATION: electricals & electronics systems for body and dash-board.



### 3.44 0,70 Series Receptacle Housing

Code	Total Number of Ways	Kit Code	Type	Color	Raw Material
282365/1	2	6480	single line	white	pbt
282627/1	3	6481	single line	white	pbt
174922/1	4	6482	single line	white	pbt
174923/1	6	6483	single line	white	pbt
! 282441/1	6	6484	double row	white	pbt
! 282366/1	8	6485	double row	white	pbt
! 282367/1	12	6488	double row	white	pbt
173852/1	14	6489	double row	white	pbt
! 282368/1	18	6490	double row	white	pbt
282369/1	20	6491	double row	white	pbt



### 3.45 0,70 Series Tab Housing

Code	Total Number of Ways	Kit Code	Type	Color	Raw Material
174460/1	2	6492	single line	white	pbt
174928/1	3	6493	single line	white	pbt
174929/1	4	6494	single line	white	pbt
174930/1	6	6495	single line	white	pbt
! 282442/1	6	6496	double row	white	pbt
282370/1	8	6497	double row	white	pbt
! 174934/1	14	6499	double row	white	pbt
! 282372/1	18	6500	double row	white	pbt
174936/1	20	6501	double row	white	pbt



### 3.46 0,70 Series Receptacle Contacts

Code	Industrial Code	Wire Size Range (mm <sup>2</sup> )	Raw Material	Extraction Tool	Hand Tool
175026/1	282374/1	0,35 - 0,50	Cu Fe Sn	22006	3991
175027/1	282375/1	1,00 - 1,50	Cu Fe Sn	22006	3991



### 3.47 0,70 Series Tab Contacts

Code	Industrial Code	Wire Size Range (mm <sup>2</sup> )	Raw Material	Extraction Tool	Hand Tool
175029/1	282377/1	0,35 - 0,50	Cu Fe Sn	22006	3991
175030/1	282378/1	1,00 - 1,50	Cu Fe Sn	22006	3991

! produced on request

## Section n°3 - Unsealed connectors & contacts

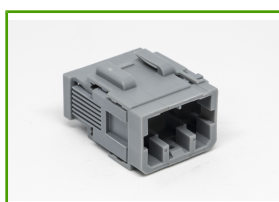
### 0,70 SERIES CONNECTORS & CONTACTS II GENERATION

APPLICATION: electricals & electronics systems  
light device.



#### 3.48 0,70 II Generation Receptacle Housing

Code	Total Number of Ways	Kit Code	Color	Raw Material
282990/2	12	6533	black	PA 6.6
282990/3	12	6535	blue	PA 6.6
282990/4	12	6537	grey	PA 6.6
282991/4	20	6542	grey	PA 6.6
! 282991/2	20	6539	black	PA 6.6
! 282991/3	20	6541	blue	PA 6.6



#### 3.49 0,70 II Generation Tab Housing

Code	Total Number of Ways	Kit Code	Color	Raw Material
282992/4	6	6536	grey	PA 6.6
282992/2	6	6532	black	PA 6.6
282992/3	6	6534	blue	PA 6.6
! 282993/4	12	6538	grey	PA 6.6
282994/3	20	6540	blue	PA 6.6



#### 3.50 0,70 II Generation Receptacle Contacts

Code	Industrial Code	Wire Size Range (mm <sup>2</sup> )	Raw Material	Extraction Tool	Hand Tool
3250	284088/2	0,75 - 1,50	Cu Fe Sn	22006	3991



#### 3.51 0,70 II Generation Tab Contacts

Code	Industrial Code	Wire Size Range (mm <sup>2</sup> )	Raw Material	Extraction Tool	Hand Tool
3275	284107/1	0,75 - 1,50	Cu Fe Sn	22006	3991

! produced on request

## Section n°3 - Unsealed connectors & contacts

### MIC SERIES CONNECTORS & CONTACTS

APPLICATION: body trucks harnesses.



#### 3.52 MIC Receptacle Housing

Code	Total Number of Ways	Kit Code	Color	Raw Material
172494/1	5	6458	white	nylon 105°
172495/1	7	6459	white	nylon 105°
172496/1	9	6460	white	nylon 105°
172497/1	11	6461	white	nylon 105°
172498/1	13	6462	white	nylon 105°
172500/1	17	6463	white	nylon 105°
172501/1	21	6464	white	nylon 105°



#### 3.53 MIC Tab Housing

Code	Total Number of Ways	Kit Code	Color	Raw Material
172504/1	5	6465	white	nylon 105°
172505/1	7	6466	white	nylon 105°
172506/1	9	6467	white	nylon 105°
172507/1	11	6468	white	12268080
172508/1	13	6469	white	nylon 105°
172509/1	17	6470	white	nylon 105°
172510/1	21	6471	white	nylon 105°



#### 3.54 MIC Receptacle Contacts

Code	Industrial Code	Wire Size Range (mm <sup>2</sup> )	Raw Material	Extraction Tool	Hand Tool
5145	281938/3	0,50 - 1,50	Cu Fe Sn	88069, 88074	3976
5182	281938/2	1,00 - 2,50	Cu Fe Sn	88069, 88074	-



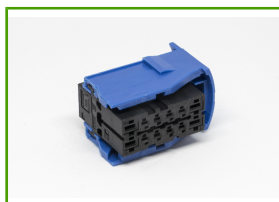
#### 3.55 MIC Tab Contacts

Code	Industrial Code	Wire Size Range (mm <sup>2</sup> )	Raw Material	Extraction Tool	Hand Tool
5180	281937/3	1,00 - 2,50	Cu Fe Sn	88074	3987

## Section n°3 - Unsealed connectors & contacts

### MCON 1,5 + AMP MCP 2,8 SERIES CONNECTORS & CONTACTS

APPLICAZIONE: junction box for 2.2 and 3.0 liters natural power engine.



#### 3.56 MCON 1,5 & AMP MCP 2,8 Series Receptacle Housing

Code	Total Number of Ways	Kit Code	Color	Raw Material
284853/2	12	6676	black	PA 6.6
284875/2	20	6677	black/blue	PA 6.6



#### 3.57 MCON 1,5 & AMP MCP 2,8 Series Tab Housing

Code	Total Number of Ways	Kit Code	Color	Raw Material
284858/3	12	6681	black	PA 6.6
284879/3	20	6682	black	PA 6.6



#### 3.58 MCON 1,5 Receptacle Contact

Code	Industrial Code	Wire Size Range (mm <sup>2</sup> )	Raw Material	Extraction Tool	Hand Tool
1241375/1	1241374/1	0,50 - 1,00	Bz Ph Sn	132225	3995
1534335/1	1534334/1	1,00 - 1,50	Bz Ph Sn	132225	3991



#### 3.59 AMP MCP 2,8 Receptacle Contact

Code	Industrial Code	Wire Size Range (mm <sup>2</sup> )	Extraction Tool	Hand Tool
3238	1/968849/1	0,50 - 1,00	24000	3991



#### 3.60 MCON 1,5 Tab Contact

Code	Industrial Code	Wire Size Range (mm <sup>2</sup> )	Raw Material	Extraction Tool	Hand Tool
1241847/2	1241846/2	1,00 - 1,50	Bz Ph Sn	132225	3991



#### 3.61 AMP MCP 2,8 Tab Contact

Code	Industrial Code	Wire Size Range (mm <sup>2</sup> )	Raw Material	Contact Size	Extraction Tool	Hand Tool
1/963746/1	1/962842/1	1,00 - 2,50	Bz Ph Sn	2,8	88040	3987

## Section n°3 - Unsealed connectors & contacts

### JUNIOR POWER TIMER CONNECTORS AND CONTACT SERIES



#### 3.62 JPT 2,8 Series Receptacle Housing

Code	Total Number of Ways	Kit Code	Color	Raw Material
963270/5	2	6654	black	PA 6.6



#### 3.63 5 Ways JPT Series Receptacle Housing

Code	Total Number of Ways	Kit Code	Color	Raw Material
282405/1	5	6679	white	PA 6.6



#### 3.64 JPT 2,8 Series Receptacle Contacts

Code	Industrial Code	Wire Size Range (mm <sup>2</sup> )	Raw Material	Extraction Tool	Hand Tool
927779/3	927779/3	0,50 - 1,00	Bz Ph Sn	88040	3991
927781/3	927773/3	1,00 - 2,50	Bz Ph Sn	88040	3987
964436/2	965999/2	1,50 - 2,50	Bz Ph Sn	88040	3987



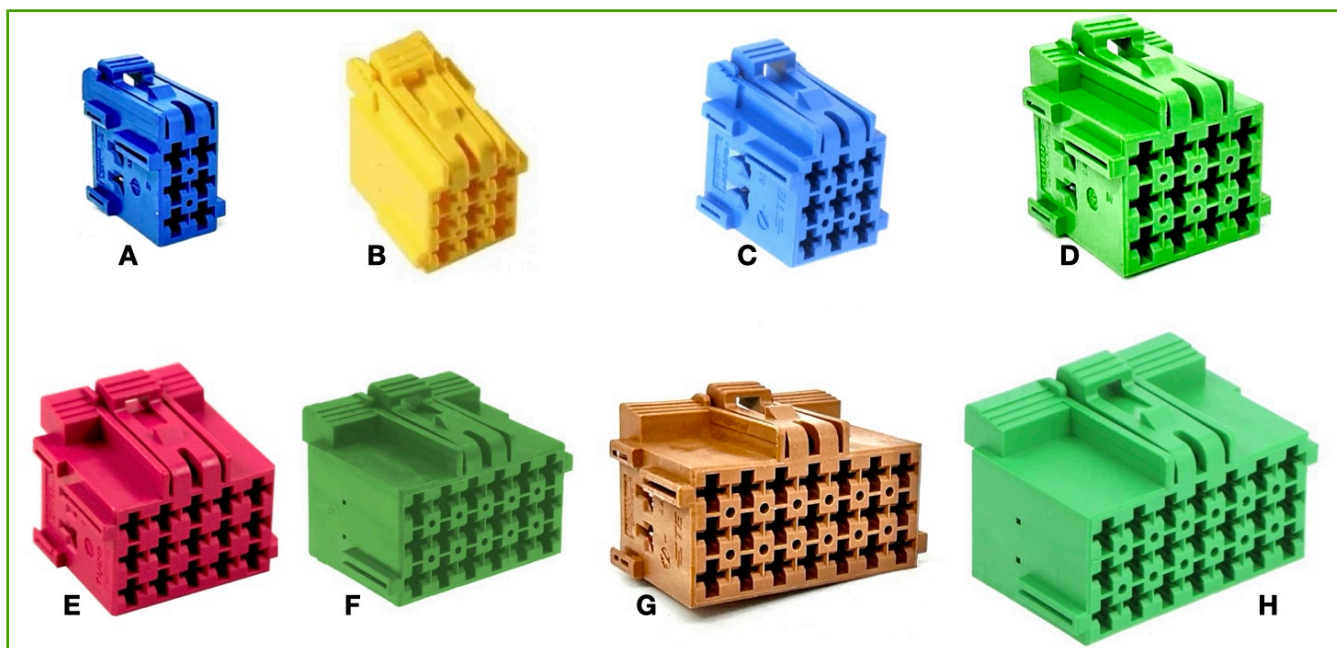
#### 3.65 JPT 2,8 Tab Contacts

Code	Industrial Code	Wire Size Range (mm <sup>2</sup> )	Raw Material	Contact Size	Extraction Tool	Hand Tool
1/963746/1	1/962842/1	1,00 - 2,50	Bz Ph Sn	2,8	88040	3987
1/962841/1	-	-	-	-	-	-
963745/1	1/962841/1	0,50 - 1,0	Cu Sn	-	-	-

## Section n°3 - Unsealed connectors & contacts

### JPT 2,8 CONNECTORS & CONTACTS

#### 3.66 JPT 2,8 Series Receptacle Housing



Code	Total Number of Ways	Kit Code	Secondary Lock	Color	Raw Material	Image
1/965640/1	6	7207	968271/1	blue	PA 6.6	A
1/967621/1	9	7203	967631/1	yellow	pbt	B
1/967621/2	9	7257	967631/1	blue	pbt	C
1/967622/1	12	7209	967632/1	green	PA 6.6	D
1/967623/1	15	6553	967633/1	violet	PA 6.6	E
1/967624/3	18	7271	967634/1	green	pbt	F
1/967625/1	21	7208	967635/1	brown	PA 6.6	G
1/967625/4	21	6794	967635/1	green	PA 6.6	H



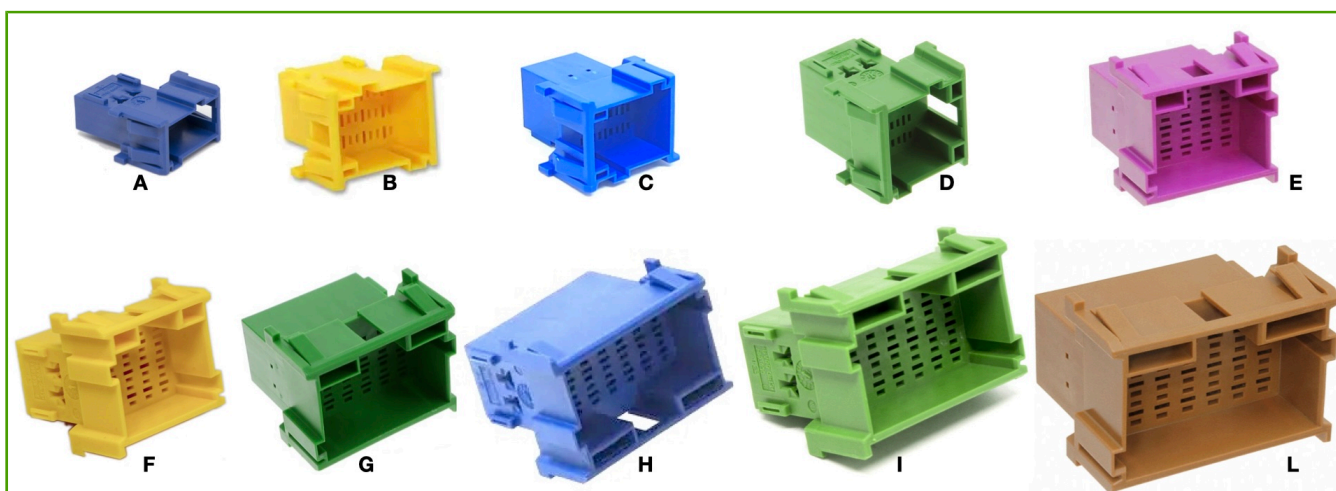
#### 3.67 JPT 2,8 Female Contacts

Code	Industrial Code	Wire Size Range (mm <sup>2</sup> )	Raw Material	Extraction Tool	Hand Tool
964436/2	965999/2	1,50 - 2,50	Bz Ph Sn	88040	3987
927779/3	927779/3	0,50 - 1,00	Bz Ph Sn	88040	3991
927781/3	927773/3	1,00 - 2,50	Bz Ph Sn	88040	3987



## Section n°3 - Unsealed connectors & contacts

### 3.68 JPT 2,8 Series Tab Housing



Code	Total Number of Ways	Kit Code	Secondary Lock	Color	Raw Material	Image
1/965641/1	6	7275	968271/1	blue	PA 6.6	A
1/967626/1	9	7202	967631/1	yellow	PA 6.6	B
1/967626/2	9	7276	967631/1	blue	PA 6.6	C
1/967627/1	12	7181	967632/1	green	PA 6.6	D
1/967628/1	15	7277	967633/1	violet	PA 6.6	E
1/967628/3	15	6555	967633/1	yellow	PA 6.6	F
1/967629/3	18	7272	967634/1	green	pbt	G
1/967630/6	21	7297	967635/1	blue	PA 6.6	H
1/967630/4	21	6556	967635/1	green	PA 6.6	I
1/967630/1	21	7316	-	brown	PA 6.6	L



### 3.69 JPT 2,8 Male Contacts

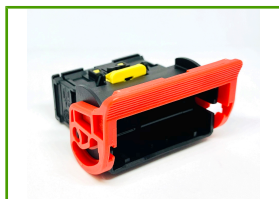
Code	Industrial Code	Wire Size Range (mm <sup>2</sup> )	Raw Material	Contact Size	Extraction Tool	Hand Tool
1/963746/1	1/962842/1	1,00 - 2,50	Bz Ph Sn	2,8	88040	3987
1/962841/1	-	-	-	-	-	-
963745/1	1/962841/1	0,50 - 1,0	Cu Sn	-	-	-



## Section n°3 - Unsealed connectors & contacts

### MCON MIXED SERIES CONNECTORS & CONTACTS

APPLICATION: IVECO Daily bodybuilder socket.



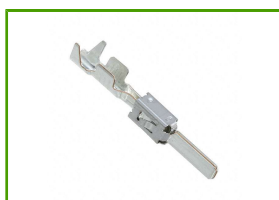
#### 3.70 MCON MIXED Series Tab Housing

Code	Total Number of Ways	Industrial Code	Kit Code	Secondary Lock	Color
22316	32	1/2236046/0	7139	2236048/1	black



#### 3.71 MCON 1,2 Series Tab Contacts

Code	Industrial Code	Wire Size Range (mm <sup>2</sup> )	Contact Size	Extraction Tool	Hand Tool
5/1418761/1	5/1418760/1	0,50 - 0,75	1,2	97028	3995



#### 3.72 2,8X0,8 Tab Contact

Code	Industrial Code	Wire Size Range (mm <sup>2</sup> )	Raw Material	Contact Size	Extraction Tool	Hand Tool
1/963746/1	1/962842/1	1,00 - 2,50	Bz Ph Sn	2,8	88040	3987



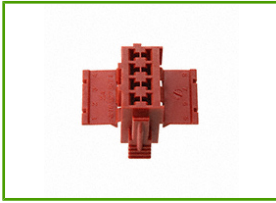
#### 3.73 5,8X0,8 TAB Contact

Code	Industrial Code	Wire Size Range (mm <sup>2</sup> )	Contact Size	Extraction Tool
1/963739/1	1/963736/1	2,5 - 4,00	5,8	88070

## Section n°3 - Unsealed connectors & contacts

### CONNECTORS & CONTACTS FOR TACHOGRAPH

APPLICATION: tachograf.



#### 3.74 Tachograph Connector

Code	Total Number of Ways	Kit Code	Color
927367/1	8	7131	red
927365/1	8	7131	white
927366/1	8	7131	yellow
927368/1	8	7131	brown



#### 3.75 Contacts for Tachograph Connector

Code	Industrial Code	Wire Size Range (mm <sup>2</sup> )	Raw Material	Extraction Tool	Hand Tool
927779/3	927779/3	0,50 - 1,00	Bz Ph Sn	88040	3991

## Section n°3 - Unsealed connectors & contacts

### MIC IV & MCP 2,8 SERIES CONNECTORS & CONTACTS

APPLICATION: trucks series body hearness.



#### 3.76 MIC IV Tab Housing

Code	Total Number of Ways	Kit Code	Color	Raw Material
1/144545/0	2	6672	black	PA 6.6
1/144546/0	3	6673	black	PA 6.6
1/144547/0	4	6864	black	PA 6.6
1/142856/0	5	6674	black	PA 6.6
1/142857/0	7	6675	black	PA 6.6



#### 3.77 MIC IV Tab Contact

Code	Industrial Code	Wire Size Range (mm <sup>2</sup> )	Raw Material	Extraction Tool	Hand Tool
142917/1	142754/1	0,50 - 1,00	Cu Fe Sn	88040	3991

### AMP MCP 2,8 CONNECTORS AND TERMINALS

APPLICATION: Iveco electric window.



#### 3.78 IVECO Electric Window Connector

Code	Total Number of Ways	Kit Code	Color	Raw Material
1418994/1	10	7152	black	PA 6.6
8/968973/1	15	7328	magenta	PA 6.6



#### 3.79 AMP MCP 2,8 terminal for Iveco electric window connector

Code	Industrial Code	Wire Size Range (mm <sup>2</sup> )	Raw Material	Extraction Tool	Hand Tool
3238	1/968849/1	0,50 - 1,00	-	24000	3991
3417	967542/1	0,50 - 1,00	Bz Ph Sn	88040, 24000	3976 + 3982

! produced on request

## Section n°3 - Unsealed connectors & contacts

### JUNIOR & STANDARD POWER TIMER SERIES CONNECTORS & CONTACTS

APPLICATION: injection key.



#### 3.80 3 Ways STANDARD POWER TIMER Receptacle Housing for Injection Key

Code	Total Number of Ways	Kit Code	Color	Raw Material
284098/1	3	6707	white	PA 6.6



#### 3.81 JPT 2,8 Series Receptacle Contacts

Code	Industrial Code	Wire Size Range (mm2)	Raw Material	Extraction Tool	Hand Tool
929941/3	-	0,35 - 0,50	Bz Ph Sn	88040	3991
927779/3	927779/3	0,50 - 1,00	Bz Ph Sn	88040	3991
927781/3	927773/3	1,00 - 2,50	Bz Ph Sn	88040	3987
964436/2	965999/2	1,50 - 2,50	Bz Ph Sn	88040	3987



#### 3.82 SPT 4,8 Series Receptacle Contacts

Code	Industrial Code	Wire Size Range (mm2)	Raw Material	Extraction Tool	Hand Tool
927838/2	927837/2	1,00 - 2,50	Bz Ph Sn	88040	3987
927825/1	927824/1	2,50 - 4,00	Bz Ph Sn	88040	3987
963714/1	963709/1	4,00 - 6,00	Bz Ph Sn	88040	3987



#### 3.83 POSITIVE LOCK Receptacles Contact Size 6,3

Code	Industrial Code	Wire Size Range (mm2)	Raw Material	Extraction Tool	Hand Tool
341001/3	154717/3	2,50 - 4,00	Bz Ph Sn	88070, 88074	3987

! produced on request

## Section n°3 - Unsealed connectors & contacts

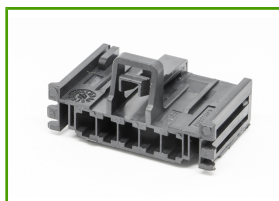
### SICMA SERIES CONNECTORS & CONTACTS

APPLICATION: body and dash board.



#### 3.84 Pluton Connector Kit(SICMA HYBRID III+II)

Code	Total Number of Ways	Kit Code	Color	Raw Material
211PC109S8017	10	6926	grey	PA 6.6
211PC122S1017	12	7075	brown	PA 6.6



#### 3.85 Heater Connector (SICMA II)

Code	Total Number of Ways	Kit Code	Color
17260500	5	6990	black



#### 3.86 Molex receptable Housing 2,8 Series 10 ways

Code	Total Number of Ways	Kit Code	Color	Raw Material	Application
98174-1002	10	7174	black	PA 6.6	Renault heaters



#### 3.87 SICMA III Receptacle Contact

Code	Industrial Code	Wire Size Range (mm <sup>2</sup> )	Raw Material	Contact Size	Extraction Tool	Hand Tool
20380	211CC2S2160	1,0 - 2,0	Cu Sn	1,5	99022	3991



#### 3.88 SICMA II Receptacle Contact

Code	Industrial Code	Wire Size Range (mm <sup>2</sup> )	Raw Material	Contact Size	Extraction Tool	Hand Tool
20310	211CC3S2120	1,00 - 2,50	Cu Sn	2,8	22006, 210041	3987

# Section n°3 - Unsealed connectors & contacts

## NSCC SERIES CONNECTORS & CONTACTS

APPLICATION: harnesses.



### 3.89 NSCC Receptacle Housings

Code	Total Number of Ways	Kit Code	Color	Raw Material
49501EV2M1	2	6450	black	pbt
988191025	2	7190	green	pbt
49601EV3M1	3	6451	black	pbt
49341EV4M1	4	6452	black	pbt



### 3.90 NSCC Tab Housings

Code	Total Number of Ways	Kit Code	Color	Raw Material
07511EV2F1	2	6454	black	pbt
07611EV3F1	3	6455	black	pbt
! 07711EV4F1	4	6456	black	pbt



### 3.91 NSCC Receptacle Contacts

Code	Industrial Code	Wire Size Range (mm <sup>2</sup> )	Raw Material	Contact Size	Extraction Tool	Hand Tool
20410	211CC2S1160	0,35 - 0,75	Cu Sn	1,5	99022	3991
20380	211CC2S2160	1,0 - 2,0	Cu Sn	1,5	99022	3991



### 3.92 NSCC Tab Contacts

Code	Industrial Code	Wire Size Range (mm <sup>2</sup> )	Raw Material	Extraction Tool	Hand Tool
20375	33512190	1,00 - 2,00	Bz Ph Sn	99022	99022

! produced on request

## Section n°3 - Unsealed connectors & contacts

### NSCC 1,5 UCC 2,8 SERIES CONNECTORS & CONTACTS

APPLICATION: body and dash board.



#### 3.93 UCC 2,8 Hybrid Series Receptacle Housing

APPLICATION: CITROEN C3 rear lights + PSA group heater.

Code	Total Number of Ways	Kit Code	Color	Raw Material
18301EV6M1	6	6557	black	PA 6.6



#### 3.94 UCC 2,8 Hybrid Series Tab Housing

Code	Total Number of Ways	Kit Code	Color	Raw Material
08311EV6F1	6	6558	black	PA 6.6



#### 3.95 NSCC 1,5 Hybrid Series Receptacle Housing

Code	Total Number of Ways	Kit Code	Color	Raw Material
982731001	16	7234	black	PA 6.6



#### 3.96 NSCC 1,5 Hybrid Series Tab Housing

Code	Total Number of Ways	Kit Code	Color
982761001	16	7235	black



#### 3.97 NSCC 1.5 + UCC 2,8 Receptacle Contacts

Code	Industrial Code	Wire Size Range (mm <sup>2</sup> )	Raw Material	Contact Size	Extraction Tool	Hand Tool
20530	2120819CA201H	0,75 - 1,50	Bz Ph Sn	1,5	22006	3991
20310	211CC3S2120	1,00 - 2,50	Cu Sn	2,8	22006, 210041	3987



#### 3.98 NSCC 1.5 + UCC 2,8 Tab Contacts

Code	Industrial Code	Wire Size Range (mm <sup>2</sup> )	Raw Material	Contact Size	Extraction Tool	Hand Tool
20425	211CL2S2160	1,0 - 2,0	Cu Fe Sn	1,5	23036, 22006	3991
20435	211CL3S2120	1,0 - 2,5	Cu Fe Sn	2,8	22006, 210041	3987

## Section n°3 - Unsealed connectors & contacts

### GT 150/280 SERIES CONNECTORS & CONTACTS

APPLICATION: body and dash board.



#### 3.99 GT 280 Series Receptacle Housing

Code	Total Number of Ways	Kit Code	Color	Raw Material
15326886	4	6589	black	PA 6.6
15326900	6	6590	black	PA 6.6



#### 3.100 GT280 Series Tab Housing

Code	Total Number of Ways	Kit Code	Color	Raw Material
! 15326904	6	6593	black	PA 6.6

### HSG SERIES CONNECTORS & CONTACTS

APPLICATION: heating for FIAT Ducato.



#### 3.101 5 Ways HSG Series Receptacle Housing

Code	Total Number of Ways	Kit Code	Color
BRT05BKFH	5	6797	black



#### 3.102 HSG Series Receptacle Contact

Code	Wire Size Range (mm <sup>2</sup> )	Extraction Tool	Hand Tool
20319	1,00 - 2,50	88074	3987

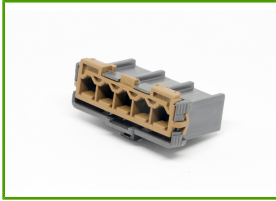
! produced on request



## Section n°3 - Unsealed connectors & contacts

### YAZAKI SERIES 187 CONNECTORS & CONTACTS

APPLICATION: electronics body and dash board devices.



#### 3.103 YAZAKI 187 Series Receptacle Housing

Code	Total Number of Ways	Kit Code	Type	Color	Raw Material
7283-6469-40	4	7233	double row	grey	pbt
3124	5	6989	single line	grey	pbt



#### 3.104 187 Series Receptacle Contact

Code	Industrial Code	Wire Size Range (mm <sup>2</sup> )	Raw Material	Extraction Tool	Hand Tool
3056	7116-4046-02	1,50 - 2,50	Cu Fe Sn	25060	3987
7116-4121-02	-	1,50 - 2,50	tin-plated brass	-	-

## Section n°3 - Unsealed connectors & contacts

### OBD II SERIES CONNECTORS & CONTACTS

APPLICATION: diagnostic system.



#### 3.105 OBD II Connector's Kit

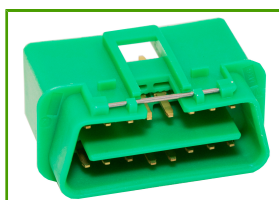
For complete wiring see CAP. 10

Code	Total Number of Ways	Color
4015	16	black



#### 3.106 OBD II Connector Panel mount Receptacle Housing

Code	Total Number of Ways	Color
48204EV16F1	16	black



#### 3.107 Modular Interface Replacement

Code	Total Number of Ways	Color
4911	16	green



#### 3.108 Receptacle Contact for OBD II Connector On Board

Code	Industrial Code	Wire Size Range (mm <sup>2</sup> )	Raw Material	Contact Size	Extraction Tool	Hand Tool
20530	2120819CA201H	0,75 - 1,50	Bz Ph Sn	1,5	22006	3991

### OBD II 24V SERIES CONNECTOR & CONTACT



#### 3.109 16 Ways OBD II 24V Tab Housing

Code	Total Number of Ways	Color
4912	16	black



#### 3.110 Male Contact for OBD II 24V Connector

Code	Wire Size Range (mm <sup>2</sup> )	Raw Material	Extraction Tool	Hand Tool
20476	0,50 - 1,00	Bz Ph Sn	97028	3991

## Section n°3 - Unsealed connectors & contacts

### DFK3 CONNECTORS & CONTACTS SERIES

APPLICATION: body and dash board.



#### 3.111 12 Ways DFK3 Receptacle Housing

Code	Total Number of Ways	Kit Code	Color	Raw Material
590881	12	6795	grey	PA 6.6



#### 3.112 DFK3 Receptacle Contact

Code	Industrial Code	Wire Size Range (mm2)	Extraction Tool	Hand Tool
20560	26471213179	1,00 - 2,50	88040	3987

### G&H-AFK SERIES CONNECTORS & CONTACTS

APPLICATION:FIAT air conditioning devices.



#### 3.113 AFK Connectors

Code	Total Number of Ways	Kit Code	Color	Raw Material
13901600699	2	6899	black	PA 6.6
13902600672	2	6899	grey	PA 6.6



#### 3.114 AFK Contact

Code	Wire Size Range (mm2)	Extraction Tool	Hand Tool
20562	2,50 - 4,00	88070	3987

## Section n°3 - Unsealed connectors & contacts

### F800 POWER SERIES CONNECTORS & CONTACTS

APPLICATION: Body Computer and fuses box.



#### 3.115 F800 Power Receptacle Contact

Code	Total Number of Ways	Kit Code	Color	Raw Material
4540100	1	6563	black	PA 6.6
4440300	2	6997	black	PA 6.6



#### 3.116 F800 Power Receptacle Contact

Code	Industrial Code	Wire Size Range (mm <sup>2</sup> )	Raw Material	Extraction Tool	Hand Tool
1107660	1707660	4,00 - 6,00	Bz Ph Sn	90022	3987
1107671	1107671	16	Bz Ph Sn	90022	-



#### 3.117 Power Connector Housing

Code	Total Number of Ways	Kit Code	Color	Raw Material
3060	1	6686	black	pbt
3061	2	6686	black	pbt



#### 3.118 Power Receptacle Contact

Code	Industrial Code	Wire Size Range (mm <sup>2</sup> )	Raw Material	Extraction Tool	Hand Tool	
3049	7116-3250	6,00 - 10,00	Bz Ph Sn	90022	3987	
!	3050	90022	2,50 - 4,00	Bz Ph Sn	90022	-

! produced on request

## Section n°3 - Unsealed connectors & contacts

### ANDERSON SERIES CONNECTORS

APPLICATION: forklift, truck refrigerators, power connections.



#### 3.119 ANDERSON 50 A Connectors

Code	Total Number of Ways	Wire Size Range (mm2)	Color	A
SB50	2	16	grey	50
SB50-RD	2	16	red	50

Connectors + Contacts



#### 3.120 ANDERSON 175 A Connectors

Code	Total Number of Ways	Wire Size Range (mm2)	Color	A
SB175-RD	2	50	red	175
SB175	2	50	grey	175

Connectors + Contacts



#### 3.121 ANDERSON 350 A Connectors

Code	Total Number of Ways	Wire Size Range (mm2)	Color	A
SB350	2	70	grey	350

Connectors + Contacts



#### 3.122 Handle for ANDERSON Connectors

Code	Color
SB995	grey

### DIN CONNECTORS



#### 3.123 DIN Plug

Code	Total Number of Ways	Color	A
DIN80PM	2	black	80
DIN160PM	2	black	160
DIN320PM	2	black	320

Connectors + Contacts



#### 3.124 DIN Socked with Handle

Code	Total Number of Ways	Color	A
DIN80PF	2	black	80
DIN160PF	2	black	160
DIN320PF-M	2	black	320

Connectors + Contacts

## Section n°3 - Unsealed connectors & contacts

### FUSEHOLDERS & RELAY SOCKET CONTACTS



#### 3.125 Receptacle Contac for Modular Fuse Holder

Code	Wire Size Range (mm2)	Hand Tool
91001	1,50 - 2,50	3987



#### 3.126 Receptacle Contact for ATO Fuse Holder

Code	Industrial Code	Wire Size Range (mm2)	Raw Material	Extraction Tool	Hand Tool
5186	626500/1	1,00 - 2,50	Cu Zn	21012	3987