



Section n °2

Standard connectors and contacts

RING TONGUES	2.1
ROUND CONTACT	2.4
FASTON RECEPTACLES CONTACTS WITHOUT COUPLING TOOTH	2.6
FASTON RECEPTACLE CONTACT WITH COUPLING TOOTH AND ANTI-SLIPS	2.12
FASTON TAB	2.19
FASTIN-FASTON HOUSING	2.24
UNIVERSAL MATE-N-LOK HOUSINGS & CONTACTS	2.50
CONNETTORI E TERMINALI COMMERCIAL MATE-N-LOK	2.54
SPADES SERIE CONNECTORS & CONTACTS	2.58
CONTACTS FOR UNIT BOXES	2.60

Section n°2 - Standard connectors and contacts

RING TONGUES



2.1 Ring Tongues Round

Code	Wire Size Range (mm2)	Raw Material	Screw Hole	Hand Tool
5150	0,50 - 1,50	tin-plated brass	4,13	3991
5142	1,00 - 2,50	tin-plated brass	5,2	3987
5171	1,00 - 2,50	tin-plated brass	6,2	3987
2674	1,00 - 2,50	tin-plated brass	8,2	3987
5165	4,00 - 6,00	tin-plated brass	8,2	3987
5172	2,50 - 6,00	tin-plated brass	10,2	3987



2.2 Ring Tongues Square Version

Code	Wire Size Range (mm2)	Raw Material	Screw Hole	Hand Tool
5162	1,00 - 2,50	tin-plated brass	5,2	3987
5161	1,00 - 2,50	tin-plated brass	6,3	3987



2.3 Ring Tongues 90°

Used for connected additional accessories for FIAT Ducato and IVECO Daily and for all vehicles with MIDI and MEGA fuses on the battery clip.

Code	Wire Size Range (mm2)	Raw Material	Screw Hole	Hand Tool
5600	2,50 - 4,00	tin-plated brass	5,2	3987

ROUND CONTACT



2.4 Socket with insulation support

Code	Industrial Code	Wire Size Range (mm2)	Raw Material	Hand Tool
5144	5144	1,00 - 2,50	tin-plated brass	3987



2.5 Pin with insulation support

Code	Industrial Code	Wire Size Range (mm2)	Raw Material	Hand Tool
5143	140670/0	1,00 - 2,50	tin-plated brass	3987

Section n°2 - Standard connectors and contacts

FASTON RECEPTACLES CONTACTS WITHOUT COUPLING TOOTH

APPLICATION: standard harnesses.



2.6 Receptacle Contact Size 2,8

Code	Industrial Code	Wire Size Range (mm ²)	Raw Material	Extraction Tool	Hand Tool
180441/2	180437/2	0,50 - 1,50	tin-plated brass	88074	3991



2.7 Receptacle Contact Size 4,8

Code	Industrial Code	Wire Size Range (mm ²)	Raw Material	Extraction Tool	Hand Tool
5151	5/160433/6	0,50 - 1,50	tin-plated brass	88074	3991



2.8 Receptacle Contact Size 6,3

* The code 181903/1 is preformed

Code	Industrial Code	Wire Size Range (mm ²)	Raw Material	Extraction Tool	Hand Tool
5205	-	0,50 - 1,50	tin-plated brass	88074	3991
181904/1	280001/9	1,00 - 2,50	tin-plated brass	88074	3987
181904/3	-	1,00 - 2,50	silver	88074	3987
180367/2	180363/2	4,00 - 6,00	tin-plated brass	88074	3987



2.9 Receptacle Contact Flag Size 6,3

Code	Industrial Code	Wire Size Range (mm ²)	Raw Material	Extraction Tool	Hand Tool
180434/1	180464/2	1,00 - 2,50	tin-plated brass	88074	3987



2.10 Receptacle and Tab Contact Size 6,3

Code	Industrial Code	Wire Size Range (mm ²)	Raw Material	Extraction Tool	Hand Tool
181637/2	280079/2	1,00 - 2,50	tin-plated brass	88074	3987



2.11 Receptacle Contact Size 9,5

Code	Industrial Code	Wire Size Range (mm ²)	Raw Material	Extraction Tool	Hand Tool
181253/2	280223/2	4,00 - 6,00	tin-plated brass	88074	3987

Section n°2 - Standard connectors and contacts

FASTON RECEPTACLE CONTACT WITH COUPLING TOOTH AND ANTI-SLIPS

APPLICATION: standard harnesses.



2.12 Receptacle Contact Size 2,8

Code	Industrial Code	Wire Size Range (mm ²)	Raw Material	Extraction Tool	Hand Tool
160367/2	160366/2	0,35 - 0,50	tin-plated brass	88074	3991
3215	160864/2	0,50 - 1,00	tin-plated brass	88074	3991



2.13 Receptacle Contact Size 4,8

Code	Industrial Code	Wire Size Range (mm ²)	Raw Material	Extraction Tool	Hand Tool
5168	280919/2	0,50 - 1,50	tin-plated brass	88074	3991



2.14 5 mm Pitch Receptacle Contact

Code	Industrial Code	Wire Size Range (mm ²)	Raw Material	Extraction Tool	Hand Tool
281879/1	282308/1	0,50 - 1,50	tin-plated brass	88074	3991



2.15 Receptacle Contact Size 6,3

Code	Industrial Code	Wire Size Range (mm ²)	Raw Material	Extraction Tool	Hand Tool
5199	280095/2	0,35 - 0,75	tin-plated brass	88074	3991
42238/A	42100/2	0,75 - 2,50	tin-plated brass	88074	3987
2/42238/A	42100/2	0,75 - 2,50	tin-plated brass	88074	3987
42238/3	-	0,75 - 2,50	silver	88074	3987
180384/2	180351/2	4,00 - 6,00	tin-plated brass	88074	3987



2.16 Positive Lock Receptacles Contacts 6,3

Code	Industrial Code	Wire Size Range (mm ²)	Raw Material	Extraction Tool	Hand Tool
160773/3	160759/3	0,50 - 1,00	tin-plated brass	88074	3991
341001/3	154717/3	2,50 - 4,00	Bz Ph Sn	88070, 88074	3987
737015/2	790319/2	4,00 - 6,00	tin-plated brass	88074	3987



2.17 POSITIVE LOCK 90° Receptacles Contact

Code	Industrial Code	Wire Size Range (mm ²)	Raw Material	Extraction Tool	Hand Tool
5149	926790/6	1,00 - 2,50	tin-plated brass	88074	3987



2.18 Receptacle Contact Size 9,5

Code	Industrial Code	Type	Wire Size Range (mm ²)	Raw Material	Extraction Tool	Hand Tool
182490/2	280756/2	big terminal	4,00 - 6,00	tin-plated brass	88074	3987

Section n°2 - Standard connectors and contacts

Code	Industrial Code	Type	Wire Size Range (mm2)	Raw Material	Extraction Tool	Hand Tool
5166	280755/4	-	6,00 - 10,00	tin-plated brass	88074	-

FASTON TAB

APPLICATION: standard harnesses.



2.19 Tab Contact 4,8

Code	Wire Size Range (mm2)	Raw Material	Extraction Tool	Hand Tool
2673	0,50 - 1,50	tin-plated brass	88074	3991



2.20 Tab Contact 6,3 x 0,8 mm with Hole

Code	Wire Size Range (mm2)	Raw Material	Extraction Tool	Hand Tool
5141	1,00 - 2,50	tin-plated brass	88074	3987
5141/3	1,00 - 2,50	Cu Fe Ag	88074	3987



2.21 Tab Contact with Retentio size 2,8X0,8

Code	Industrial Code	Wire Size Range (mm2)	Raw Material	Extraction Tool	Hand Tool
5157	160743/4	0,75 - 2,50	Bz Ph Sn	88040, 88074	3987



2.22 Tab Contact with Retentio size 6,3X0,8

Code	Industrial Code	Wire Size Range (mm2)	Raw Material	Extraction Tool	Hand Tool
42241/A	42098/2	0,75 - 2,50	tin-plated brass	88074	3987
5200	280096/2	0,35 - 0,50	tin-plated brass	88074	3991
2/42241/A	42098/2	0,75 - 2,50	tin-plated brass	88074	3987
42241/3	-	0,75 - 2,50	Cu Fe Ag	88074	3987
180409/2	180352/2	4,00 - 6,00	tin-plated brass	88074	3987



2.23 Tab Fastin-on Contact Size 9,5X1,2

Code	Industrial Code	Wire Size Range (mm2)	Raw Material	Extraction Tool	Hand Tool
5159	280075/2	4,00 - 6,00	tin-plated brass	88074	3987

Section n°2 - Standard connectors and contacts

FASTIN-FASTON HOUSING

APPLICATION: standard harnesses.



2.24 Insulation Sleeve Slide On from Front for Faston Receptacle

Code	Total Number of Ways	Color	Raw Material	Contact Size
20103	1	white	polyamide	4.8
280232/0	1	white	polyamide	6.3
280232/5	1	black	polyamide	6.3
280311/0	1	white	polyamide	9.5



2.25 Insulation Sleeve Slide On from Back for Faston Receptacle

Code	Total Number of Ways	Color	Raw Material	Contact Size
735052/0	1	white	polyamide	2.8
20102	1	black	polyamide	4.8
2/180930/0	1	white	polyamide	6.3
2/180930/5	1	black	polyamide	6.3



2.26 Insulation Sleeves from Slide On Front for Faston Tab Size 6,3

Code	Total Number of Ways	Color	Raw Material	Contact Size
20104	1	black	nylon 105°	6.3



2.27 POSITIVE LOCK Receptacle Housings

Code	Total Number of Ways	Model	Color	Raw Material
154719/0	1	right standard	black	polyamide
281991/2	1	with inspection	black	polyamide
926291/1	1	flag	black	polyamide



2.28 Flag Insulation Sleeve Slide On from Front

Code	Total Number of Ways	Color	Raw Material	Contact Size
180984/5	1	black	polyamide	6.3

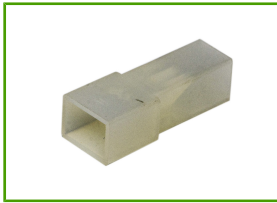


2.29 Receptacle Housing 1Way Size 6,3

Code	Total Number of Ways	Color	Raw Material
180905/0	1	white	nylon 105°

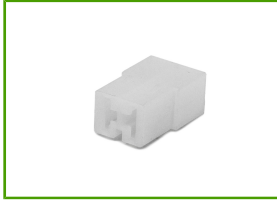
! produced on request

Section n°2 - Standard connectors and contacts



2.30 Tab Housing 1 Way Size 6,3

Code	Total Number of Ways	Color	Raw Material
180916/0	1	white	nylon 105°



2.31 Receptacle Housing 2 Ways Size 6,3

Code	Total Number of Ways	Color	Raw Material
180923/0	2	white	nylon 105°



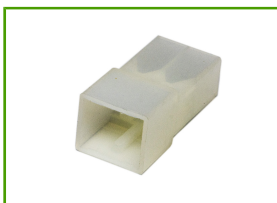
2.32 Receptacle Housing 2 Ways Size 6,3

Code	Total Number of Ways	Color	Raw Material
280543/0	2	white	nylon 105°



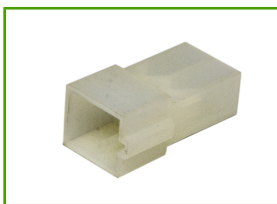
2.33 Receptacle Housing 2 Ways Size 6,3

Code	Total Number of Ways	Color	Raw Material
180907/0	2	white	nylon 105°



2.34 Tab Housing 2 Ways Size 6,3

Code	Total Number of Ways	Color	Raw Material
180924/0	2	white	nylon 105°



2.35 Tab Housing 2 Ways Size 6,3

Code	Total Number of Ways	Color	Raw Material
280542/0	2	white	nylon 105°



2.36 Tab Housing 2 Ways Size 6,3

Code	Total Number of Ways	Color	Raw Material
180908/0	2	white	nylon 105°

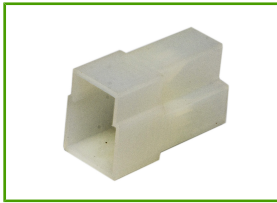


2.37 Receptacle Housing 3 Ways Size 6,3

Code	Total Number of Ways	Color	Raw Material
180941/0	3	white	nylon 105°

! produced on request

Section n°2 - Standard connectors and contacts



2.38 Tab Housing 3 Ways Size 6,3

Code	Total Number of Ways	Color	Raw Material
180940/0	3	white	nylon 105°



2.39 Receptacle Housing 4 Ways Size 6,3

Code	Total Number of Ways	Color	Raw Material
180900/0	4	white	nylon 105°



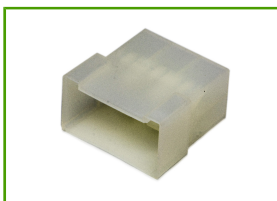
2.40 Tab Housing 4 Ways Size 6,3

Code	Total Number of Ways	Color	Raw Material
180901/0	4	white	nylon 105°



2.41 Receptacle Housing 6 Ways Size 6,3

Code	Total Number of Ways	Color	Raw Material
280314/0	6	white	nylon 105°
180904/0	6	white	nylon 105°



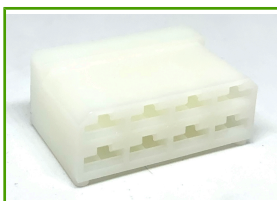
2.42 Tab Housing 6 Ways Size 6,3

Code	Total Number of Ways	Color	Raw Material
180906/0	6	white	nylon 105°



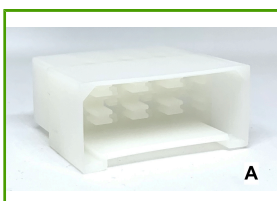
2.43 Circular Connector for Truck-Trailer Interface

Code	Total Number of Ways	Color	Raw Material	Accessory Contacts
180451	7	white	PA 6.6	42238/A



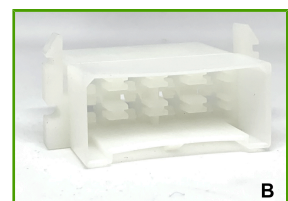
2.44 Receptacle Housing 8 Ways Size 6,3

Code	Total Number of Ways	Color	Raw Material
163007/0	8	white	nylon 105°



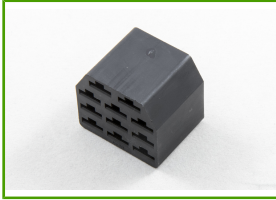
2.45 Tab Housing 8 Ways Size 6,3

Code	Total Number of Ways	Color	Raw Material	Image
280099/0	8	white	nylon 105°	A
280430/0	8	white	nylon 105°	B



! produced on request

Section n°2 - Standard connectors and contacts



2.46 Receptacle Housing 11 Ways Size 6,3

Code	Total Number of Ways	Color	Raw Material
280262/5	11	black	nylon 105°



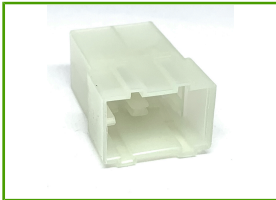
2.47 Tab Housing 11 Ways Size 6,3

Code	Total Number of Ways	Color	Raw Material
280263/5	11	black	nylon 105°



2.48 Receptacle Housing 4 Ways Size 9,5

Code	Total Number of Ways	Color	Raw Material
280073/0	4	white	nylon 105°



2.49 Tab Housing 4 Ways Size 9,5

Code	Total Number of Ways	Color	Raw Material
280072/0	4	white	nylon 105°

Section n°2 - Standard connectors and contacts

UNIVERSAL MATE-N-LOK HOUSINGS & CONTACTS

APPLICATION: standard harnesses.



2.50 Receptable Housing Universal MATE-N-LOK

Code	Total Number of Ways	Kit Code	Color	Raw Material
1/480699	2	6887	white	nylon 105°
1/480701	3	6888	white	nylon 105°
1/480703/0	4	-	white	nylon 105°
1/480705	6	6890	white	nylon 105°
1/480707	9	6891	white	nylon 105°
1/480709	12	6892	white	nylon 105°
1/480711	15	-	white	nylon 105°



2.51 Tab Housing Universal MATE-N-LOK

Code	Total Number of Ways	Kit Code	Color	Raw Material
1/480698	2	6893	white	nylon 105°
1/480700	3	6894	white	nylon 105°
1/480702/0	4	-	white	nylon 105
1/480704	6	6896	white	nylon 105°
1/480706	9	6897	white	nylon 105°
1/480708	12	6898	white	nylon 105°
1/480710	15	-	white	nylon 105°



2.52 Universal MATE-N-LOK Female Contact

Code	Industrial Code	Wire Size Range (mm ²)	Raw Material	Extraction Tool	Hand Tool
350550/1	350536/1	0,50 - 2,00	Cu Fe Sn	87035	3991



2.53 Universal MATE-N-LOK Male Contact

Code	Industrial Code	Wire Size Range (mm ²)	Raw Material	Extraction Tool	Hand Tool
350547/1	350218/1	0,50 - 2,00	Cu Fe Sn	87035	3991

Section n°2 - Standard connectors and contacts

CONNETTORI E TERMINALI COMMERCIAL MATE-N-LOK

APPLICAZIONE: sistemi di cablaggio standard.



2.54 4 Ways Circular Receptacles Hsg Commercial MATE-N-LOK

Code	Total Number of Ways	Color	Raw Material
7268	4	white	nylon 105°



2.55 4 Ways Circular Receptacles Hsg Commercial MATE-N-LOK

Code	Total Number of Ways	Color	Raw Material
7269	4	white	nylon 105°



2.56 Female Contact Commercial MATE-N-LOK

Code	Industrial Code	Wire Size Range (mm2)	Raw Material	Extraction Tool	Hand Tool
163304/2	160495/2	0,50 - 1,00	tin-plated brass	87035	3991



2.57 Male Contact Commercial MATE-N-LOK

Code	Industrial Code	Wire Size Range (mm2)	Raw Material	Extraction Tool	Hand Tool
163305/2	160496/2	0,50 - 1,00	tin-plated brass	87035	3991

SPADES SERIE CONNECTORS & CONTACTS

APPLICATION: dashboard and rear lights for old cars generations.



2.58 Dash Board & Rear Lights Receptacle Housing

Code	Total Number of Ways	Kit Code	Model	Color	Raw Material
5620	6	6699	straight	white	polyamide



2.59 Receptacle Contact for Dash Board & Rear Light Connectors

Code	Industrial Code	Type	Wire Size Range (mm2)	Raw Material	Extraction Tool	Hand Tool
1103	94509-0103	right	0,75 - 1,00	Cu Fe Sn	88074	3991

! produced on request

Section n°2 - Standard connectors and contacts

CONTACTS FOR UNIT BOXES



2.60 GSK Contact

Code	Wire Size Range (mm ²)	Raw Material	Hand Tool
20563	1,50-2,50	Cu Cr Ti Si	3987